

proportions as agreed at 19 June 2020

Category	Area	Description	Proportion of scoring (%)	Ref no. in xls	As at 14/08/20		% Response
					Responses	Outstanding	
Patients/Patient Representatives/ Carers	University Hospital Monklands catchment area	Airdrie – ML6	12	1	45	52	46.4%
		Coatbridge – ML5	11	2	12	36	25.0%
		Bellshill – ML4	3	3	4	7	36.4%
		Cumbernauld/Kilsyth – G65, 67, 68 & 69 and G33 and FK1	11	4	32	70	31.4%
		Viewpark/Uddingston – G71	3	5	5	14	26.3%
	University Hospital Wishaw catchment area	ML1, ML2, ML7, ML8, ML9, ML11, ML12	7	6	11	13	45.8%
	University Hospital Hairmyres catchment area	G72 (0 & 9), G74, G75, ML3, ML10 and G45	4	7	4	5	44.4%
	Sub-total		51		113	197	36.5%
Staff side representatives	Staff side Representatives	Acute Division	5	8	6		100.0%
		Health & Social Care Partnerships	2	9	2	1	66.7%
Stakeholders/Service providers	University Hospital Monklands	Site Operational Lead	1	10	1		100.0%
		Medical	6	11	15	5	75.0%
		Nursing	6	12	7	3	70.0%
		Other	6	13	8	6	57.1%
	University Hospital Hairmyres	Site Operational Lead	1	14	1		100.0%
		Medical	3	15	3		100.0%
		Nursing	2	16	2	1	66.7%
		Other	1	17	1		100.0%
	University Hospital Wishaw	Site Operational Lead	1	18	1		100.0%
		Medical	3	19	4	1	80.0%
		Nursing	2	20	2	1	66.7%
		Other	1	21	2	1	66.7%
	Health & Social Care Partnerships	North	5	22	5	3	62.5%
South		2	23	3		100.0%	
	Scottish Ambulance Service	2	24	2		100.0%	
	Sub-total		49		65	22	74.7%
	Total		100%				

Year	Month	Day	Time	Location	Activity	Duration	Frequency	Priority	Status	Remarks	Responsible	Contact	Notes
2023	Jan	01	08:00	Room 101	Meeting	1h	Weekly	High	Completed	Discussed Q1 goals.	J.Doe	123-4567	
2023	Jan	02	14:00	Room 102	Training	2h	Monthly	Medium	Completed	New software training.	A.Smith	987-6543	
2023	Jan	03	09:00	Room 103	Workshop	3h	Quarterly	High	In Progress	Product development workshop.	M.Chen	555-8888	
2023	Jan	04	10:00	Room 104	Conference	1h	Annual	High	Completed	Annual strategy conference.	L.Garcia	444-3333	
2023	Jan	05	15:00	Room 105	Workshop	2h	Bi-weekly	Medium	Completed	Customer feedback workshop.	K.Patel	333-2222	
2023	Jan	06	08:30	Room 106	Meeting	1h	Weekly	High	Completed	Weekly team sync.	N.Kim	222-1111	
2023	Jan	07	13:00	Room 107	Workshop	2h	Monthly	Medium	Completed	Design thinking workshop.	O.Lee	111-0000	
2023	Jan	08	09:30	Room 108	Workshop	3h	Quarterly	High	In Progress	UX research workshop.	P.Martinez	000-9999	
2023	Jan	09	11:00	Room 109	Meeting	1h	Weekly	High	Completed	Weekly stakeholder meeting.	Q.Nguyen	999-8888	
2023	Jan	10	14:30	Room 110	Workshop	2h	Monthly	Medium	Completed	Marketing strategy workshop.	R.Oh	888-7777	
2023	Jan	11	08:00	Room 111	Meeting	1h	Weekly	High	Completed	Weekly ops meeting.	S.Park	777-6666	
2023	Jan	12	10:30	Room 112	Workshop	2h	Monthly	Medium	Completed	HR training workshop.	T.Roberts	666-5555	
2023	Jan	13	13:00	Room 113	Workshop	2h	Monthly	Medium	Completed	Finance planning workshop.	U.Schmidt	555-4444	
2023	Jan	14	09:00	Room 114	Meeting	1h	Weekly	High	Completed	Weekly legal review.	V.Thompson	444-3333	
2023	Jan	15	11:30	Room 115	Workshop	2h	Monthly	Medium	Completed	IT security workshop.	W.Walker	333-2222	
2023	Jan	16	14:00	Room 116	Workshop	2h	Monthly	Medium	Completed	Compliance training.	X.Yang	222-1111	
2023	Jan	17	08:30	Room 117	Meeting	1h	Weekly	High	Completed	Weekly sales meeting.	Y.Zhang	111-0000	
2023	Jan	18	10:00	Room 118	Workshop	2h	Monthly	Medium	Completed	Product demo workshop.	Z.Chen	000-9999	
2023	Jan	19	12:30	Room 119	Workshop	2h	Monthly	Medium	Completed	Customer service training.	AA.Lee	999-8888	
2023	Jan	20	09:30	Room 120	Meeting	1h	Weekly	High	Completed	Weekly HR meeting.	BB.Wang	888-7777	
2023	Jan	21	11:00	Room 121	Workshop	2h	Monthly	Medium	Completed	Finance reporting workshop.	CC.Li	777-6666	
2023	Jan	22	13:30	Room 122	Workshop	2h	Monthly	Medium	Completed	Marketing analytics workshop.	DD.Chen	666-5555	
2023	Jan	23	08:00	Room 123	Meeting	1h	Weekly	High	Completed	Weekly ops meeting.	EE.Lee	555-4444	
2023	Jan	24	10:30	Room 124	Workshop	2h	Monthly	Medium	Completed	HR training workshop.	FF.Wang	444-3333	
2023	Jan	25	13:00	Room 125	Workshop	2h	Monthly	Medium	Completed	Finance planning workshop.	GG.Li	333-2222	
2023	Jan	26	09:00	Room 126	Meeting	1h	Weekly	High	Completed	Weekly legal review.	HH.Chen	222-1111	
2023	Jan	27	11:30	Room 127	Workshop	2h	Monthly	Medium	Completed	IT security workshop.	II.Lee	111-0000	
2023	Jan	28	14:00	Room 128	Workshop	2h	Monthly	Medium	Completed	Compliance training.	JJ.Wang	000-9999	
2023	Jan	29	08:30	Room 129	Meeting	1h	Weekly	High	Completed	Weekly sales meeting.	KK.Li	999-8888	
2023	Jan	30	10:00	Room 130	Workshop	2h	Monthly	Medium	Completed	Product demo workshop.	LL.Chen	888-7777	
2023	Jan	31	12:30	Room 131	Workshop	2h	Monthly	Medium	Completed	Customer service training.	MM.Lee	777-6666	



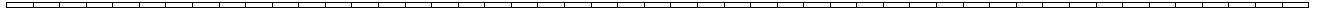
Participant weightings

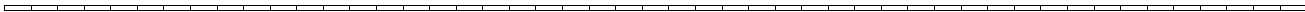
Category	Number of responses	Target %	Actual %	Weighting needed (Target/Actual)
1	45	12	25.2809	0.4747
2	12	11	6.7416	1.6317
3	4	3	2.2472	1.3350
4	32	11	17.9775	0.6119
5	5	3	2.8090	1.0680
6	11	7	6.1798	1.1327
7	4	4	2.2472	1.7800
8	6	5	3.3708	1.4833
9	2	2	1.1236	1.7800
10	1	1	0.5618	1.7800
11	15	6	8.4270	0.7120
12	7	6	3.9326	1.5257
13	8	6	4.4944	1.3350
14	1	1	0.5618	1.7800
15	3	3	1.6854	1.7800
16	2	2	1.1236	1.7800
17	1	1	0.5618	1.7800
18	1	1	0.5618	1.7800
19	4	3	2.2472	1.3350
20	2	2	1.1236	1.7800
21	2	1	1.1236	0.8900
22	5	5	2.8090	1.7800
23	3	2	1.6854	1.1867
24	2	2	1.1236	1.7800
<b>Total</b>	<b>178</b>	<b>100</b>	<b>100.0000</b>	<b>1.0000</b>

Criteria weightings

Criterion	1	2	3	4	5	Total
Unweighted (actual) %	20	20	20	20	20	100
Weighted percentage required (target)	31.1	22.96	19.27	14.47	12.2	100
Weighting figure (target/actual)	1.555	1.148	0.9635	0.7235	0.61	5







=====

=====  
=====



	Participant weighted C1	Participant weighted C2	Participant weighted C3	Participant weighted C4	Participant weighted C5	Total weighted participants unweighted criteria	Total weighted participants weighted criteria	Total weighted participants unweighted criteria mean	Total weighted participants weighted criteria mean
Gartcosh	1040.096285	1042.338574	1163.718633	1104.86695	958.2062192	5309.226651	5319.07434	5.965	5.976
Glenmavis	805.0280687	837.5218339	884.1723201	840.4771829	1019.461529	4386.660944	4295.150527	4.929	4.826
Wester Moffat	931.2863198	958.1300779	904.9467024	1017.069557	1069.396115	4880.828773	4808.18116	5.484	5.402

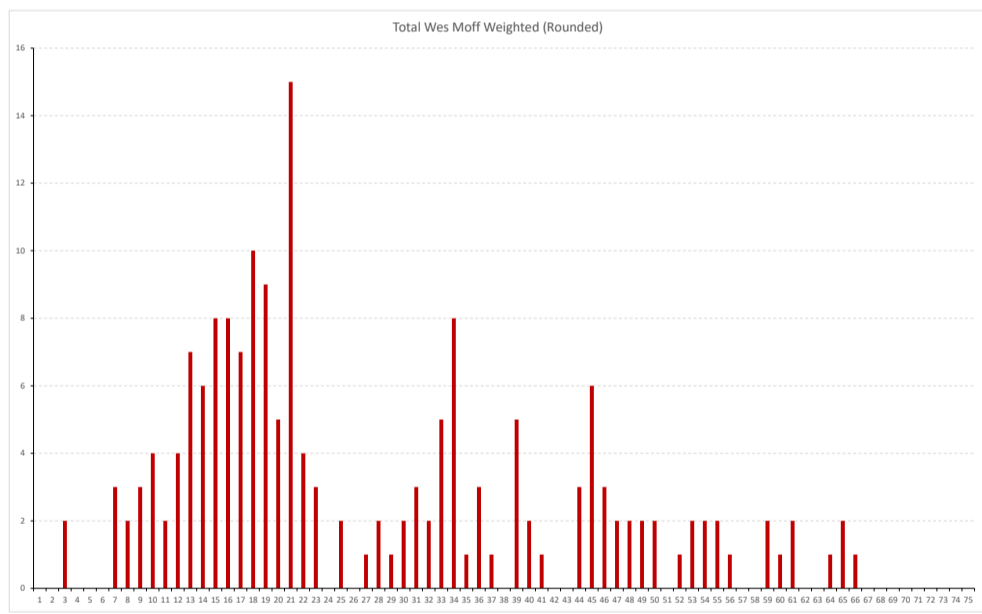
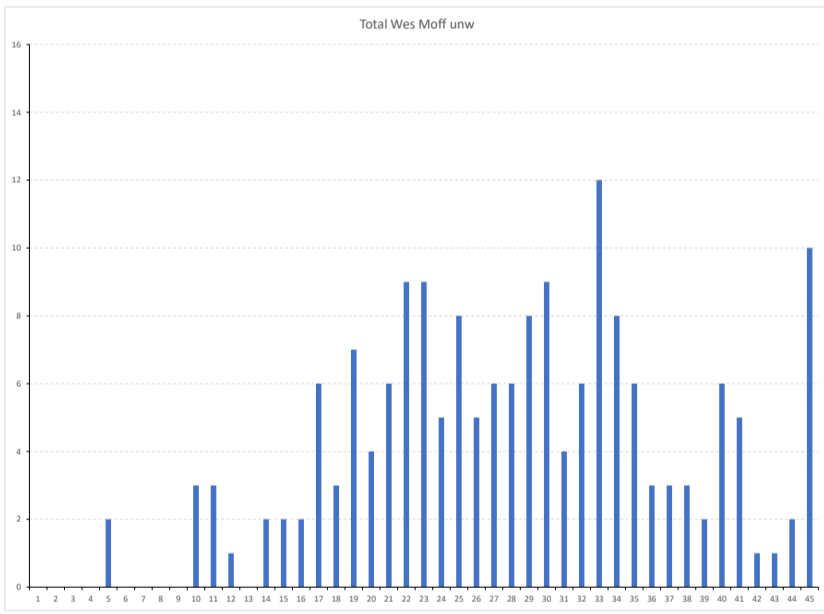
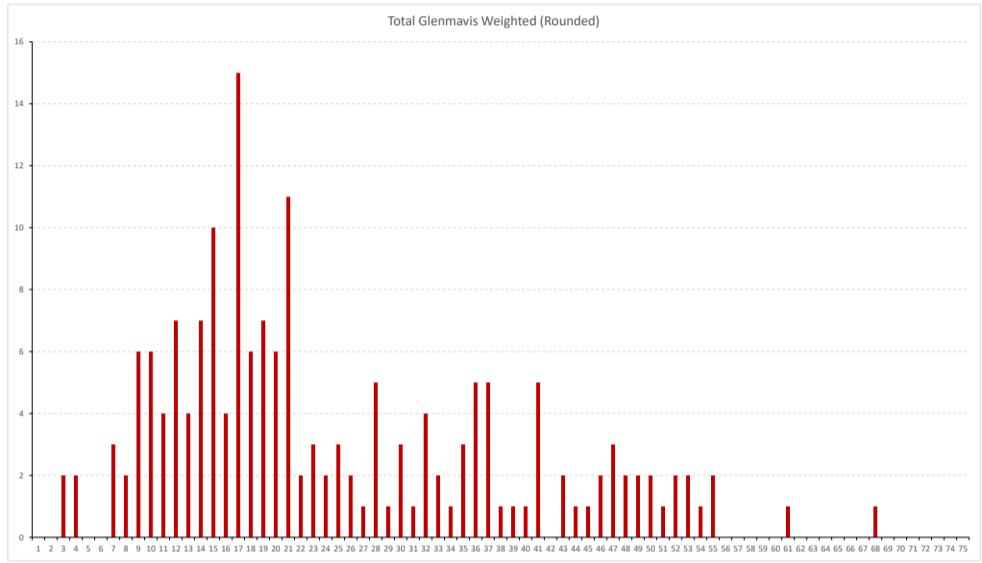
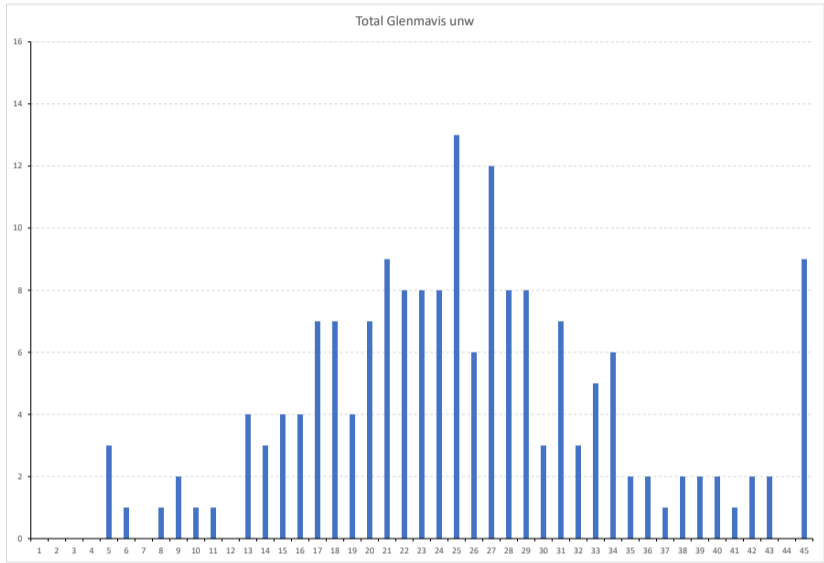
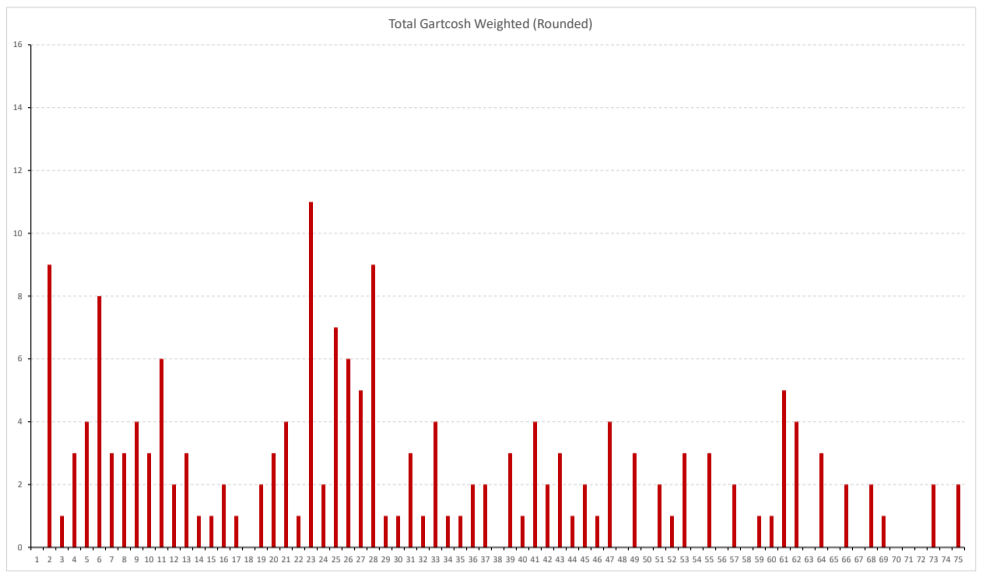
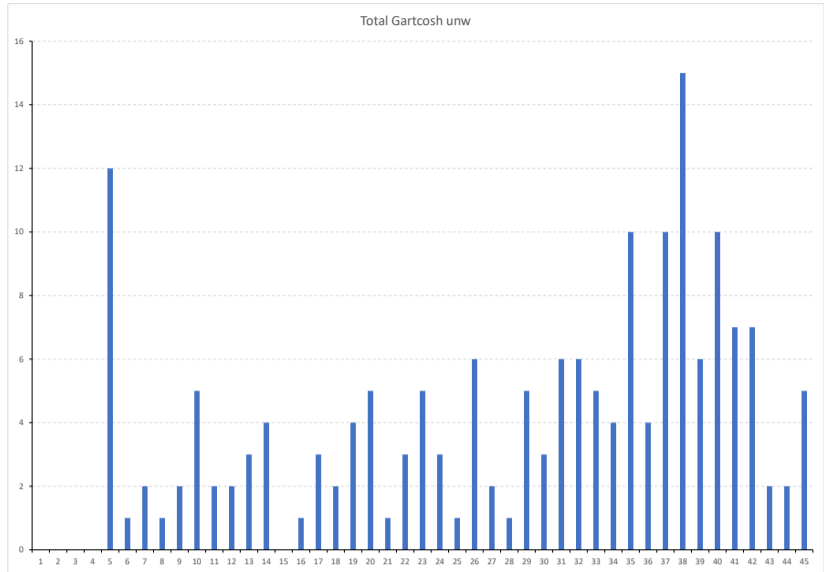
Criterion	1	2	3	4	5
Unweighted (actual) %	20	20	20	20	20
Weighted percentage required	31.1	22.96	19.27	14.47	12.2
Weighting figure (Target/Actual)	1.555	1.148	0.9635	0.7235	0.61

Ref	Total Gartcosh unw	Total Glenmavis unw	Total Wes Moff unw	Total Gartcosh Weighted (Rounded)	Total Glenmavis Weighted (Rounded)	Total Wes Moff Weighted (Rounded)
1	0	0	0	0	0	0
2	0	0	0	9	0	0
3	0	0	0	1	2	2
4	0	0	0	3	2	0
5	12	3	2	4	0	0
6	1	1	0	8	0	0
7	2	0	0	3	3	3
8	1	1	0	3	2	2
9	2	2	0	4	6	3
10	5	1	3	3	6	4
11	2	1	3	6	4	2
12	2	0	1	2	7	4
13	3	4	0	3	4	7
14	4	3	2	1	7	6
15	0	4	2	1	10	8
16	1	4	2	2	4	8
17	3	7	6	1	15	7
18	2	7	3	0	6	10
19	4	4	7	2	7	9
20	5	7	4	3	6	5
21	1	9	6	4	11	15
22	3	8	9	1	2	4
23	5	8	9	11	3	3
24	3	8	5	2	2	0
25	1	13	8	7	3	2
26	6	6	5	6	2	0
27	2	12	6	5	1	1
28	1	8	6	9	5	2
29	5	8	8	1	1	1
30	3	3	9	1	3	2
31	6	7	4	3	1	3
32	6	3	6	1	4	2
33	5	5	12	4	2	5
34	4	6	8	1	1	8
35	10	2	6	1	3	1
36	4	2	3	2	5	3
37	10	1	3	2	5	1
38	15	2	3	0	1	0
39	6	2	2	3	1	5
40	10	2	6	1	1	2
41	7	1	5	4	5	1
42	7	2	1	2	0	0
43	2	2	1	3	2	0
44	2	0	2	1	1	3
45	5	9	10	2	1	6
46				1	2	3
47				4	3	2
48				0	2	2
49				3	2	2
50				0	2	2
51				2	1	0
52				1	2	1
53				3	2	2
54				0	1	2
55				3	2	2
56				0	0	1
57				2	0	0
58				0	0	0
59				1	0	2
60				1	0	1
61				5	1	2
62				4	0	0
63				0	0	0
64				3	0	1
65				0	0	2
66				2	0	1
67				0	0	0
68				2	1	0
69				1	0	0
70				0	0	0
71				0	0	0
72				0	0	0
73				2	0	0
74				0	0	0
75				2	0	0

Scatter Grpah - Unweighted and Weighted Results



URN	Total Cartouch	Total Cartouch w	Total Glenmavis	Total Glenmavis w	Total Weir Muff	Total Weir Muff w	Total Cartouch (Rounded)	Glenmavis (Rounded)	Total Weir Muff (Rounded)
PA2579v	5	2.37333333	45	21.36	45	21.36	2	21	21
PA4429v	10	4.74666667	35	16.63333333	41	19.46133333	5	17	19
PA4617v	17	7.91333333	39	12.20666667	36	17.08	13	17	17
PC7112P	10	4.74666667	35	16.63333333	35	16.63333333	5	9	17
PC9288P	17	8.09333333	43	20.40666667	46	21.36	8	20	21
PO9794v	5	2.37333333	42	19.56	45	21.36	2	20	21
PR8818v	5	2.37333333	45	21.36	45	21.36	2	21	21
PF2569v	14	6.64333333	25	11.86666667	25	16.63333333	12	7	17
PI2043v	7	3.32666667	36	17.08	37	17.26666667	3	17	18
PH1514v	26	11.34333333	20	9.49333333	20	15.64	12	9	18
PH1748v	24	11.392	24	11.392	32	15.89333333	11	11	15
PH4019v	30	14.24	29	13.76333333	17	8.06933333	14	14	8
PH9517v	5	2.37333333	43	20.40666667	46	21.36	2	20	21
PH6238v	23	9.96	39	18.512	43	20.40666667	10	19	20
PI2528v	5	2.37333333	45	21.36	45	21.36	2	21	21
PH2355v	21	10.91733333	34	16.18666667	21	9.96	11	16	10
PH2224v	28	11.29066667	19	9.01666667	28	11.29066667	13	9	13
PH3720v	5	2.37333333	45	21.36	45	21.36	2	21	21
PH3781v	19	18.512	15	7.12	41	19.46133333	19	7	19
PH3513v	5	2.37333333	45	21.36	45	21.36	2	21	21
PH3610v	5	2.37333333	45	21.36	45	21.36	2	21	21
PH4703v	24	11.392	28	8.54	28	11.29066667	11	9	13
PH7074v	12	5.696	45	21.36	44	20.85333333	6	21	21
PH4575v	14	6.64333333	42	19.56	44	20.85333333	7	20	21
PH3527v	20	9.49333333	25	11.86666667	25	16.63333333	9	12	17
PH5499v	18	8.54	35	11.86666667	36	17.08	9	12	17
PH8999v	13	6.17066667	29	12.83333333	27	12.832	6	14	13
PH8950v	24	11.392	25	11.86666667	32	15.89333333	11	12	15
PD2817v	10	4.74666667	40	18.66666667	38	18.07333333	5	19	18
PD2818v	16	7.59466667	17	8.06933333	13	5.64	8	8	8
PD2837v	35	16.63333333	36	17.08	41	19.46133333	17	17	19
PH4844v	13	6.17066667	29	12.83333333	18	18.07333333	6	15	18
PH8614v	9	4.272	28	11.29066667	40	18.66666667	4	13	19
PH8799v	19	18.512	15	7.12	30	9	14	14	15
PH8071v	13	6.17066667	27	12.832	38	18.07333333	6	16	18
PI1428v	9	4.272	34	12.832	40	18.66666667	4	13	19
PI2132v	12	5.696	32	15.18333333	41	19.46133333	6	15	19
PI9272v	8	3.79733333	37	17.56266667	39	18.512	4	18	19
PI9782v	11	5.22133333	29	12.83333333	29	14.74666667	5	14	15
PI2213v	3	15.64	38	18.07333333	33	15.64	16	18	16
PI2280v	22	10.42666667	39	18.512	29	13.76333333	10	19	14
PI4403v	5	2.37333333	45	21.36	45	21.36	2	21	21
PI9999v	22	10.42666667	22	10.42666667	34	16.18666667	12	10	16
PI2827v	41	19.46133333	32	10.42666667	29	13.76333333	19	10	14
PI2163v	23	10.91733333	25	11.86666667	25	11.86666667	11	12	12
PI7144v	20	12.83333333	34	16.66666667	34	16.66666667	13	15	15
PH4832v	20	12.83333333	17	27.78333333	19	21.00666667	13	28	11
PH4320v	31	10.18666667	29	47.81333333	12	18.58	15	47	20
PH2125v	38	62.00333333	33	13.445	30	64	34	49	49
PI2813v	17	27.78333333	29	47.81333333	37	60.37333333	28	47	60
PH6821v	10	15.64	33	14.265	21	15.47666667	13	34	15
PH5645v	29	47.81333333	30	48.95	40	65.26666667	47	49	65
PI9999v	28	62.00333333	28	45.86666667	24	31.36	62	46	39
PI2129v	19	31.00666667	19	31.00666667	40	65.26666667	31	31	65
PI2827v	42	68.33	28	45.86666667	28	45.86666667	69	46	46
PI9320v	29	63.63	28	45.86666667	32	39.89666667	64	38	38
PI9950v	30	48.95	24	39.16	33	53.845	49	39	54
PI8799v	20	5.4	21	28.835	21	28.835	21	29	29
PI1641v	31	41.385	26	34.71	33	44.055	41	35	44
PI3177v	29	38.725	32	42.72	25	33.75	39	43	33
PH5526v	16	69.075	28	37.38	26	38.71	60	37	37
PA5473v	44	26.525	29	17.34475	14	8.18625	27	18	9
PH9747v	12	15.64	27	13.46125	27	20	13	13	13
PH9189v	17	10.451875	17	10.451875	15	9.178125	10	10	9
PH9941v	35	27.54875	5	3.08975	5	3.08975	28	3	3
PH9199v	32	19.38	12	15.29675	16	9.79	20	15	10
PH9199v	36	21.451625	27	16.52025	23	14.07125	21	17	14
PH1876v	18	23.1125	18	15.90875	11	18.98125	23	16	18
PH7833v	42	25.89875	15	9.178125	15	9.178125	26	9	9
PH4844v	26	15.8975	24	14.685	20	13.275	18	16	18
PH6238v	32	19.58	24	14.685	29	17.74475	20	15	18
PH9383v	45	27.54875	5	3.08975	5	3.08975	28	3	3
PH9286v	37	22.81875	37	21.41625	33	20.38125	23	20	21
PH8957v	45	27.54875	31	18.98125	30	18.5625	28	19	18
PH8278v	17	22.81875	15	15.29675	15	11.91875	23	15	15
PH1632v	38	23.25125	25	15.29675	22	13.46125	23	15	13
PH4844v	41	25.89875	27	16.52025	27	16.52025	25	17	17
PH4844v	14	8.9625	14	16.52025	11	8.79825	17	9	7
PH4844v	38	23.25125	23	14.07125	17	10.451875	23	14	10
PH4844v	40	24.475	40	15.29675	24	14.685	24	15	15
PH4844v	38	11.01375	18	11.01375	18	11.67625	23	11	12
PH4844v	41	25.89875	23	17.12125	23	17.12125	23	17	15
PH4844v	38	23.25125	27	16.52025	34	14.685	23	17	10
PH4844v	35	22.81875	17	7.96475	17	10.451875	23	8	10
PH4844v	16	21.451625	11	6.79625	11	14.88	24	21	15
PH4844v	35	21.451625	27	12.375	26	15.8975	21	12	16
PH4844v	17	22.81875	28	21.12125	28	21.12125	23	17	17
PH4844v	44	26.8225	27	16.52025	23	14.07125	27	17	14
PH4844v	37	22.81875	26	15.8975	23	14.07125	23	16	14
PH4844v	42	24.8975	29	18.98125	29	17.94875	19	26	19
PH4844v	42	25.89875	20	12.375	25	15.29675	26	12	15
PH4844v	10	6.1875	26	17.12125	14	10.8975	6	17	17
PH4844v	35	21.451625	23	14.07125	21	12.89875	21	14	13
PH4844v	26	27.78	27	27.78	26	27.78	26	26	26
PH4844v	40	42.72	13	11.888	17	18.156	43	14	18
PH4844v	31	31.38	21	22.48	21	22.48	33	22	22
PH4844v	39	45.82	9	9.612	10	12.04	42	10	11
PH4844v	38	40.584	24	26.612	30	32.04	41	26	32
PH4844v	43	43.048208	9	10.345445	11	12.46	43	10	12
PH4844v	22	24.92	22	24.92	34	38.51272727	25	25	39
PH4844v	40	40.590909	20	22.6454545	30	36.24727273	45	23	36
PH4844v	16	40.77818182	22	22.6454545	29	32.84909091	41	23	33
PH4844v	15	5.66363636	45	40.97272727	40	40.39090909	6	51	45
PH4844v	17	43.50209091	37	37.38	42	37.38	42	37	43
PH4844v	33	37.38	18	20.38909091	19	21.52181818	17	20	22
PH4844v	5	5.66363636	8	8	8	8	8	8	8
PH4844v	34	38.51272727	22	24.92	27	30.58363636	39	25	31
PH4844v	41	46.41181818	21	23.77777778	29	32.84909091	46	24	33
PH4844v	39	44.17636364	33	37.38	37	36.58363636	44	37	44
PH4844v	37	65.86	21	37.38	22	39.16	66	37	39
PH4844v	37	65.86	18	32.04	18	32.04	66	32	39
PH4844v	38	67.64	18	32.04	27	48.06	68	32	48
PH4844v	32	39.38	17	30.26	36	36	39	30	36
PH4844v	35	37.08333333	22	32.63333333	30	14.5	37	33	45
PH4844v	32	47.46666667	13	19.33333333	19	28.18333333	47	19	28
PH4844v	18	26.2	16	23.33333333	16	47.46666667	24	47	24
PH4844v	33	34.11666667	22	32.63333333	23	34.11666667	34	33	34
PH4844v	31	47.46666667	34	50.43333333	36	35.51666667	47	30	52
PH4844v	23	48.95	26.7	48.95	23	34.11666667	49	27	34
PH4844v	31	55.8	31	55.8	31	58.74	55	55	55
PH4844v	32	56.96	32	51.62	30	53.4	57	52	53
PH4844v	34	65.12	23	40.94	25	44.5	61	45	49
PH4844v	39	27.78	31	27.78	31	27.072	28	23	28
PH4844v	38	27.056	24	17.088	30	21.36	27	17	21
PH4844v	41	36.636	5	3.66	30	7.32	41	4	7
PH4844v	34	24.208	29	17.8	38	19.96	24	18	20
PH4844v	42	29.904	21	14.952	31	22.072	30	15	22
PH4844v	33	14.952	21	14.952	13	14.976	25		



	Blue	Orange	Yellow	Red	Purple
1					
2					
3					
4					
5					
6					
7					
8					
9					
10					
11					
12					
13					
14					
15					
16					
17					
18					
19					
20					
21					
22					
23					
24					
25					
26					
27					
28					
29					
30					
31					
32					
33					
34					
35					
36					
37					
38					
39					
40					
41					
42					
43					
44					
45					
46					
47					
48					
49					
50					
51					
52					
53					
54					
55					
56					
57					
58					
59					
60					
61					
62					
63					
64					
65					
66					
67					
68					
69					
70					
71					
72					
73					
74					
75					
76					
77					
78					
79					
80					
81					
82					
83					
84					
85					
86					
87					
88					
89					
90					
91					
92					
93					
94					
95					
96					
97					
98					
99					
100					

Blue	Orange	Yellow	Red	Purple
------	--------	--------	-----	--------

--	--	--	--	--

\_\_\_\_\_

≡

PATIENT PARTICIPANTS UNWEIGHTED TOTALS

	Weighting Area	CRITERION 1			CRITERION 2			CRITERION 3			CRITERION 4			CRITERION 5		
		GARTCOSH U	GLENMAVIS U	WESTER MOFFAT U	GARTCOSH U	GLENMAVIS U	WESTER MOFFAT U	GARTCOSH U	GLENMAVIS U	WESTER MOFFAT U	GARTCOSH U	GLENMAVIS U	WESTER MOFFAT U	GARTCOSH U	GLENMAVIS U	WESTER MOFFAT U
PA2067h	1	2	8	9	2	8	9	2	9	9	1	9	3	5	5	
PA4542r	1	4	5	6	5	6	7	6	5	7	6	5	8	6	7	
PA4547b	1	1	3	6	2	4	7	2	5	6	3	2	8	2	5	
PC1122t	1	1	3	6	2	4	7	2	5	6	3	2	8	2	5	
PC5088t	1	1	3	6	2	4	7	2	5	6	3	2	8	2	5	
PO5475e	1	1	3	6	2	4	7	2	5	6	3	2	8	2	5	
PE8681y	1	1	3	6	2	4	7	2	5	6	3	2	8	2	5	
PF2956d	1	1	3	6	2	4	7	2	5	6	3	2	8	2	5	
PG2043n	1	1	3	6	2	4	7	2	5	6	3	2	8	2	5	
PH1164u	1	1	3	6	2	4	7	2	5	6	3	2	8	2	5	
PH3748y	1	1	3	6	2	4	7	2	5	6	3	2	8	2	5	
PH4340y	1	1	3	6	2	4	7	2	5	6	3	2	8	2	5	
PH5091e	1	1	3	6	2	4	7	2	5	6	3	2	8	2	5	
PH6268p	1	1	3	6	2	4	7	2	5	6	3	2	8	2	5	
PI2012t	1	1	3	6	2	4	7	2	5	6	3	2	8	2	5	
PI4035d	1	1	3	6	2	4	7	2	5	6	3	2	8	2	5	
PK0224n	1	1	3	6	2	4	7	2	5	6	3	2	8	2	5	
PK5720v	1	1	3	6	2	4	7	2	5	6	3	2	8	2	5	
PK6738f	1	1	3	6	2	4	7	2	5	6	3	2	8	2	5	
PM3151z	1	1	3	6	2	4	7	2	5	6	3	2	8	2	5	
PM5510y	1	1	3	6	2	4	7	2	5	6	3	2	8	2	5	
PM62703p	1	1	3	6	2	4	7	2	5	6	3	2	8	2	5	
PM7074b	1	1	3	6	2	4	7	2	5	6	3	2	8	2	5	
PM8575q	1	1	3	6	2	4	7	2	5	6	3	2	8	2	5	
PN5052h	1	1	3	6	2	4	7	2	5	6	3	2	8	2	5	
PN5094h	1	1	3	6	2	4	7	2	5	6	3	2	8	2	5	
PN8289e	1	1	3	6	2	4	7	2	5	6	3	2	8	2	5	
PN89503q	1	1	3	6	2	4	7	2	5	6	3	2	8	2	5	
PO20217e	1	1	3	6	2	4	7	2	5	6	3	2	8	2	5	
PO2083c	1	1	3	6	2	4	7	2	5	6	3	2	8	2	5	
PO80357b	1	1	3	6	2	4	7	2	5	6	3	2	8	2	5	
PR4384m	1	1	3	6	2	4	7	2	5	6	3	2	8	2	5	
PS6054t	1	1	3	6	2	4	7	2	5	6	3	2	8	2	5	
PS8247p	1	1	3	6	2	4	7	2	5	6	3	2	8	2	5	
PT9807z	1	1	3	6	2	4	7	2	5	6	3	2	8	2	5	
PJ14248c	1	1	3	6	2	4	7	2	5	6	3	2	8	2	5	
PJ1921v	1	1	3	6	2	4	7	2	5	6	3	2	8	2	5	
PJ52272z	1	1	3	6	2	4	7	2	5	6	3	2	8	2	5	
PJ8178c	1	1	3	6	2	4	7	2	5	6	3	2	8	2	5	
PV1211m	1	1	3	6	2	4	7	2	5	6	3	2	8	2	5	
PV2038b	1	1	3	6	2	4	7	2	5	6	3	2	8	2	5	
PV40487f	1	1	3	6	2	4	7	2	5	6	3	2	8	2	5	
PW99939d	1	1	3	6	2	4	7	2	5	6	3	2	8	2	5	
PX74027r	1	1	3	6	2	4	7	2	5	6	3	2	8	2	5	
PZ14037h	1	1	3	6	2	4	7	2	5	6	3	2	8	2	5	
PA7744a	1	1	3	6	2	4	7	2	5	6	3	2	8	2	5	
PA84632z	2	3	3	3	3	3	3	3	3	3	3	3	3	3	3	
PG56260t	2	6	6	6	6	6	6	6	6	6	6	6	6	6	6	
PG7321m	2	8	8	8	8	8	8	8	8	8	8	8	8	8	8	
PI2831v	2	1	3	5	9	1	3	5	9	1	3	5	9	1	3	
PK4683z	2	3	3	3	3	3	3	3	3	3	3	3	3	3	3	
PK65645v	2	4	5	8	4	6	9	5	5	7	8	7	7	8	7	
PN9498j	2	6	5	4	7	4	3	8	5	6	7	3	4	9	7	
PT1210v	2	4	4	7	4	3	8	5	6	7	2	2	9	4	5	
PT8287f	2	9	4	5	7	4	5	8	6	4	9	8	9	9	6	
PG3260q	2	8	4	4	8	4	4	8	5	4	8	5	4	7	5	
PI9006p	2	8	3	6	3	8	9	9	5	5	9	3	4	1	5	
PK8176n	3	8	3	3	8	4	3	8	5	9	4	6	7	5	5	
PD16041r	3	7	4	7	4	7	7	5	7	7	7	7	7	5	5	
PS3747g	3	5	7	2	5	7	7	5	5	5	8	7	7	6	4	
PV6263h	3	9	4	4	9	4	5	9	4	4	9	8	8	9	8	
PA84723b	4	8	3	2	9	6	2	9	6	2	9	6	6	6	3	
PM69714v	4	7	3	2	6	4	4	6	4	4	7	6	6	6	5	
PM91589d	4	4	3	3	3	3	3	3	3	3	3	3	3	3	3	
PM98341v	4	9	1	1	9	1	1	9	1	1	9	1	1	9	1	
PC9296n	4	5	3	3	6	4	3	6	5	3	7	7	4	8	6	
PD55196w	4	6	5	4	7	5	4	7	5	4	8	6	6	7	5	
PF19076q	4	8	5	6	8	5	6	8	5	6	7	6	7	5	6	
PF7235a	4	9	2	2	1	2	1	2	8	4	4	8	4	4	4	
PH4348w	4	7	9	1	1	1	1	9	1	1	5	4	8	4	9	
PH6288s	4	6	2	5	7	4	4	5	6	6	9	9	5	5	5	
PH76303w	4	9	1	1	9	1	1	9	1	1	9	1	1	9	1	
PI9296r	4	8	7	6	8	7	6	8	7	6	7	7	6	7	8	
PK60557n	4	9	6	7	6	7	6	7	6	7	9	6	5	9	6	
PK81728u	4	7	5	4	7	5	4	7	5	4	7	4	4	8	6	
PM11632p	4	8	3	3	9	6	5	7	6	5	5	5	5	9	5	
PM36687b	4	9	5	4	8	4	4	9	4	4	7	6	7	8	8	
PM48765v	4	2	2	2	6	2	2	6	2	2	5	2	3	4	3	
PM79055q	4	9	3	2	9	3	2	6	4	4	8	6	1	6	7	
PM84013j	4	8	5	5	8	5	5	9	5	4	7	5	5	8	5	
PM94397w	4	8	4	5	8	3	4	7	5	5	8	3	2	7	3	
PO2170c	4	9	5	4	6	5	5	9	5	5	8	6	7	6	7	
PO97601y	4	8	7	3	6	6	4	8	5	5	9	2	6	7	6	
PR85529p	4	9	2	3	9	2	3	8	2	2	7	2	3	4	5	
PS5814a	4	7	2	4	7	2	4	9	2	6	9	1	3	4	7	
PT1220p	4	8	4	5	6	3	4	8	3	3	8	4	6	5	6	
PT77007y	4	9	5	3	9	5	3	7	7	5	6	5	5	6	5	
PT81748x	4	9	5	4	9	6	5	9	6	4	8	4	5	9	6	
PM90007e	4	8	5	4	8	5	4	8	5	4	6	6	6	7	5	
PM8881f	4	9	7	7	8	6	6	9	7	6	8	5	6	8	4	
PX7713d	4	8	2	4	8	2	4	9	5	5	8	5	6	9	6	
PY68875q	4	1	6	6	1	6	5	5	5	5	2	2	9	1	9	
PZ19662j	4	7	4	3	7	4	3	9	4	4	6	5	5	6	6	
PC84334	5	8	4	3	4	6	4	7	5	4	2	6	5	7	5	
PG27347d	5	8	2	3	8	2	3	8	3	3	8	2	4	8	4	
PG92066h	5	8	2	3	5	6	6	5	5	6	2	3	7	6	4	
PK18523p	5	8	1	2	7	2	1	8	3	4	8	1	2	8	2	
PY1286f	6	9	4	6	9	4	6	9	4	6	8	5	5	3	7	
PA58354s	6	7	2	2	7	2	2	8	2	3	8	1	2	8	2	
PA70949y	6	3	3	7	3	3	6	5	5	5	8	6	6	6	8	
PB53954n	6	8	4	6	8	4	6	8	4	4	6	8	4	7	7	
PC77629q	6	7	4	6	7	4	6	7	4	6	8	5	6	7	5	
PD72798u	6	7	9	8	1	9	8	1	9	8	1	9	8	1	9	
PG6439e	6	8	6	5	7	7	7	6	6	8	6	6	8	8	5	
PI8336k	6	7	3	2	6	5	4	7	4	3	7	3	5	6	3	
PK98810b	6	1	2	7	1	2	7	1	2	7	1	1	7	1	2	
PK45330h	6	6	4	5	6	3	5	8	6	7	7	5	5	7	4	
PL46038g	6	9	4	7	9	5	6	9	4	4	9	2	4	5	6	
PT10798b	6	8	6	4	8	6	4	8	7	6	7	7	6	8	7	
PS4211f	7	8	4	4	7	5	5	8	4	4	8	3	4	6	5	
PN18684n	7	8	3	5	8	3	4	5	7	4	7	3	3	7	5	
PN84751d	7	8	3	2	6	8	2	6	8	3	3	3	6	6	6	
PS45476a	7	5	3	7	6	5	3	7	6	5	3	2	8	2	6	



STAFF PARTICIPANTS UNWEIGHTED TOTALS

URN	Weighting Area	CRITERION 1			CRITERION 2			CRITERION 3			CRITERION 4			CRITERION 5		
		GARTCOSH U	GLENMAVIS U	WESTER MOFFAT U	GARTCOSH U	GLENMAVIS U	WESTER MOFFAT U	GARTCOSH U	GLENMAVIS U	WESTER MOFFAT U	GARTCOSH U	GLENMAVIS U	WESTER MOFFAT U	GARTCOSH U	GLENMAVIS U	WESTER MOFFAT U
SJ36235y	8	5	4	5	5	4	6	5	4	5	5	4	5	5	4	5
SN33463y	8	6	2	3	8	2	3	7	2	3	7	2	5	4	5	5
ST91228t	8	2	3	5	2	3	5	2	3	5	7	1	8	5	6	9
SU16227m	8	2	5	4	5	4	4	5	4	5	6	5	5	4	5	5
SV12751k	8	7	7	7	7	7	7	8	7	7	6	6	4	7	8	8
SY83278p	8	7	3	4	8	3	4	9	3	3	5	2	4	7	7	7
SA11272w	9	6	6	7	6	6	7	6	6	6	8	8	5	5	5	5
SY29365z	9	7	5	5	5	7	7	7	6	5	7	5	6	6	5	5
SP44341r	10															
SC35326k	11	7	8	8	9	6	6	8	6	6	7	6	6	5	5	5
SC55816w	11	8	4	6	8	3	6	8	5	5	8	6	6	6	7	7
SC63883y	11	8	1	2	9	1	2	9	1	1	8	1	2	9	1	3
SD52953c	11	6	4	5	8	4	5	8	4	5	6	6	6	7	7	7
SE22007n	11	8	2	7	9	2	6	9	3	3	8	6	7	8	8	8
SF37629k	11	7	4	5	7	3	4	8	4	4	7	4	4	6	6	6
SF78519y	11	8	1	3	8	2	4	9	6	6	8	1	2	6	4	5
SK29638r	11	7	3	4	8	3	4	8	3	4	5	3	7	5	3	6
SM91668m	11	8	4	6	9	1	5	9	4	4	7	1	1	4	5	6
SP14142x	11	6	5	8	8	5	6	9	7	7	4	2	6	4	6	8
SP28999r	11	8	5	6	7	5	5	9	6	6	8	5	8	8	8	8
SP63225a	11	8	5	5	8	5	5	8	3	3	8	6	6	5	5	5
SP89379c	11	8	2	2	8	1	2	9	1	1	7	1	4	6	1	2
SW27300f	11	3	3	3	8	5	4	8	4	3	8	8	8	5	5	5
SY81535t	11	9	1	1	9	1	1	9	2	2	9	1	1	9	5	5
SF62487r	12	8	3	4	8	3	4	9	4	4	8	4	4	7	5	2
SH11194u	12	7	6	6	7	6	6	9	6	6	9	8	7	8	7	7
SH37230k	12	1	6	4	1	5	4	2	5	4	2	5	4	1	6	6
SM96953k	12	3	6	6	3	7	8	5	6	7	7	6	3	1	6	9
SN39963v	12	4	4	4	5	4	4	5	4	3	5	5	5	4	6	6
SU41838h	12	6	5	5	4	5	5	6	5	5	6	5	5	4	6	6
SY29392d	12	8	7	5	8	7	5	8	7	5	8	6	9	8	7	5
SB16078x	13	1	8	8	1	9	9	1	7	8	1	7	7	1	9	9
SG41777a	13	6	7	7	4	5	5	8	7	6	5	5	5	4	7	7
SM15544b	13	9	3	3	9	2	2	9	2	3	9	3	3	7	6	6
SN31406c	13	1	3	8	1	7	8	1	6	8	2	7	7	1	9	9
SP68735n	13	8	5	6	8	5	6	9	4	4	8	5	5	7	7	7
SR15487z	13	7	6	7	7	6	7	8	6	6	8	7	7	7	8	8
ST10275w	13	4	7	5	4	5	4	3	4	5	6	4	2	2	7	5
SU16719s	13	2	2	8	1	2	7	2	4	8	1	2	6	4	3	5
SD30386x	14															
SF50783h	15	7	2	3	7	2	3	8	2	2	7	5	6	7	6	5
SF88435y	15	5	5	5	5	5	5	5	5	5	5	5	5	3	3	3
SQ11329r	15	9	3	2	9	2	2	9	2	3	9	2	2	5	5	5
SP20328d	16	7	3	2	8	4	2	8	4	3	8	2	2	7	8	8
SP79027c	16	6	4	5	6	4	5	7	5	6	8	6	6	6	6	6
SG16708y	17	8	3	5	8	3	5	8	5	5	7	2	4	5	5	6
SP80459u	18															
SF29567d	19	1	4	9	2	4	9	5	5	6	2	1	9	1	3	9
SP14238z	19	8	6	6	8	3	4	9	5	5	8	4	4	8	6	6
SQ52661u	19	8	5	7	8	6	7	8	7	7	7	7	8	4	2	4
SX59548a	19	8	4	6	8	4	6	8	6	7	7	6	7	7	7	8
SA19672y	20	5	3	3	5	3	3	6	3	3	8	6	8	6	5	5
SP60856r	20	8	4	7	7	7	7	7	6	6	6	6	7	6	7	7
SC64888s	21	7	4	4	5	4	4	5	4	5	6	6	6	6	5	4
SP87319s	21	6	5	5	6	6	6	7	4	4	7	2	4	3	4	7
SB24220c	22	8	5	5	8	5	5	9	4	3	8	4	3	9	5	4
SE24233e	22	7	3	7	8	3	7	7	2	7	5	3	8	2	5	8
SH22942d	22	5	8	3	3	8	6	5	7	4	4	8	6	3	7	7
SM18349c	22	1	8	8	1	8	8	7	6	6	4	4	4	1	8	8
SQ77488y	22	7	3	4	7	3	4	6	4	4	8	2	3	7	5	4
SF54837y	23	7	4	5	7	4	5	7	5	5	8	4	4	7	5	6
SJ76201z	23	4	8	6	5	9	8	5	8	8	4	8	9	8	8	8
SK27940r	23	7	2	3	8	2	2	9	2	2	8	2	3	6	6	6
SG43321g	24															
SH14434s	24															
<b>TOTAL</b>	<b>65</b>	<b>403</b>	<b>281</b>	<b>332</b>	<b>417</b>	<b>281</b>	<b>329</b>	<b>457</b>	<b>296</b>	<b>311</b>	<b>422</b>	<b>290</b>	<b>351</b>	<b>355</b>	<b>363</b>	<b>389</b>
<b>MEAN</b>		<b>6.2</b>	<b>4.323076923</b>	<b>5.107692308</b>	<b>6.415384615</b>	<b>4.323076923</b>	<b>5.061538462</b>	<b>7.030769231</b>	<b>4.553846154</b>	<b>4.784615385</b>	<b>6.492307692</b>	<b>4.461538462</b>	<b>5.4</b>	<b>5.461538462</b>	<b>5.584615385</b>	<b>5.984615385</b>
<b>SD</b>		<b>2.272113554</b>	<b>1.829512335</b>	<b>1.812483422</b>	<b>2.377579571</b>	<b>2.008635204</b>	<b>1.844560611</b>	<b>2.143079201</b>	<b>1.667996265</b>	<b>1.709278975</b>	<b>1.95354707</b>	<b>2.13656356</b>	<b>2.112463017</b>	<b>2.264377143</b>	<b>1.740081784</b>	<b>1.754390098</b>

MEANS

	Unweighted C1	Unweighted C2	Unweighted C3	Unweighted C4	Unweighted C5	Total unw crit mean	Total w crit mean
Gartcosh	6.200	6.415	7.031	6.492	5.462	6.320	6.362
Glenmavis	4.323	4.323	4.554	4.462	5.585	4.649	4.541
Wester Moffat	5.108	5.062	4.785	5.400	5.985	5.268	5.184

Criterion	1	2	3	4	5
Unweighted (actual)	20	20	20	20	20
Weighted percentage	31.1	22.96	19.27	14.47	12.2
Weighting figure (tar)	1.555	1.148	0.9635	0.7235	0.61

AREA 1: AIRDRIE PARTICIPANTS UNWEIGHTED TOTALS

URN	Weighting Area	CRITERION 1			CRITERION 2			CRITERION 3			CRITERION 4			CRITERION 5		
		GARTCOSH U	GLENMAVIS U	WESTER MOFFAT U	GARTCOSH U	GLENMAVIS U	WESTER MOFFAT U	GARTCOSH U	GLENMAVIS U	WESTER MOFFAT U	GARTCOSH U	GLENMAVIS U	WESTER MOFFAT U	GARTCOSH U	GLENMAVIS U	WESTER MOFFAT U
PA20679v	1	1	9	9	1	9	9	1	9	9	1	9	9	1	9	9
PA45426r	1	2	8	9	2	8	9	2	9	9	1	5	9	3	5	5
PB40457b	1	4	5	6	5	6	7	6	5	7	6	5	8	6	7	8
PC71122t	1	1	3	6	2	4	7	2	5	6	3	2	8	2	5	8
PC95088t	1	1	9	9	1	9	9	9	9	9	1	7	9	5	9	9
PD94794e	1	1	9	9	1	8	9	1	8	9	1	9	9	1	8	9
PE86881y	1	1	9	9	1	9	9	1	9	9	1	9	9	1	9	9
PF29569d	1	1	4	7	3	5	7	3	4	6	6	6	6	1	6	9
PG29043n	1	1	5	8	1	8	8	2	8	7	1	8	8	2	7	6
PH1164u	1	6	4	6	6	4	6	7	3	7	1	7	8	6	2	6
PH37489y	1	5	4	7	4	5	7	7	5	5	5	3	6	3	7	7
PH43401y	1	4	8	2	7	5	3	6	5	3	6	6	6	7	5	3
PH50917e	1	1	7	9	1	9	9	1	9	9	1	9	9	1	9	9
PH66268p	1	2	7	9	2	7	9	4	8	8	5	9	9	8	8	8
PJ20128t	1	1	9	9	1	9	9	1	9	9	1	9	9	1	9	9
PJ40335d	1	3	6	3	4	7	3	6	7	3	6	7	7	4	7	5
PK10224n	1	7	3	3	7	3	3	8	6	6	3	1	9	3	6	7
PK57200v	1	1	9	9	1	9	9	1	9	9	1	9	9	1	9	9
PK67381f	1	9	3	7	8	3	8	8	3	8	7	3	9	7	3	9
PM33151z	1	1	9	9	1	9	9	1	9	9	1	9	9	1	9	9
PM36100y	1	1	9	9	1	9	9	1	9	9	1	9	9	1	9	9
PM62703p	1	4	5	5	4	2	6	4	4	5	5	2	6	7	5	6
PM70746b	1	1	9	9	3	9	8	5	9	9	1	9	9	2	9	9
PM85735q	1	2	8	9	2	8	9	4	9	9	3	8	8	3	9	9
PN52052h	1	2	5	8	2	5	8	6	6	6	3	4	8	7	5	5
PN56949h	1	2	5	8	2	5	8	5	6	6	2	4	9	7	5	5
PN82899e	1	2	4	6	2	7	4	3	6	5	2	7	6	4	5	6
PN89503q	1	2	4	8	6	4	6	7	5	6	6	6	6	3	6	6
PQ29217g	1	2	8	7	1	8	8	3	9	8	2	7	7	2	8	8
PQ50835c	1	2	2	7	2	2	7	2	3	6	7	7	7	3	3	6
PQ80357b	1	6	7	8	7	7	8	8	8	7	8	7	9	6	7	9
PR43846m	1	1	7	8	1	5	7	4	7	8	5	5	8	2	7	7
PS68654t	1	1	5	9	1	6	9	5	5	5	1	5	8	1	7	9
PS82479p	1	2	9	9	3	7	7	4	4	6	7	4	4	3	6	6
PT98075z	1	2	9	9	2	7	9	4	7	7	1	7	9	4	4	4
PU14248c	1	1	5	9	1	5	9	5	5	5	1	5	8	1	7	9
PU71821v	1	1	7	9	2	6	8	3	8	9	4	5	7	2	6	8
PU92272z	1	1	8	8	1	7	8	1	8	8	2	6	7	3	8	8
PU93780c	1	1	6	7	1	6	7	5	5	5	3	5	5	1	7	7
PV12213m	1	6	7	6	6	7	6	8	8	8	5	8	7	8	8	6
PV23038b	1	3	8	5	3	8	5	3	8	5	5	7	6	8	8	8
PV40487g	1	1	9	9	1	9	9	1	9	9	1	9	9	1	9	9
PW99939d	1	5	3	7	5	3	7	7	6	6	6	6	7	3	4	7
PX74027r	1	8	4	6	8	5	5	7	5	8	9	3	4	9	5	6
PZ16037h	1	4	5	5	4	5	5	5	5	5	5	5	5	5	5	5
<b>TOTAL</b>	45	116	288	335	130	288	331	187	303	317	153	282	343	160	301	330
<b>MEAN</b>		2.57777778	6.4	7.44444444	2.88888889	6.4	7.35555556	4.15555556	6.73333333	7.04444444	3.4	6.26666667	7.62222222	3.55555556	6.68888889	7.33333333
<b>SD</b>		2.126551721	2.209483691	1.840893503	2.20765427	2.104108535	1.785746031	2.458339753	2.004540301	1.75752351	2.415856709	2.240129866	1.481536194	2.491399347	1.916699604	1.678744119

MEANS

	Unweighted C1	Unweighted C2	Unweighted C3	Unweighted C4	Unweighted C5	Total unweighted mean	Total weighted mean
Gartcosh	2.578	2.889	4.156	3.400	3.556	3.316	3.192
Glenmavis	6.400	6.400	6.733	6.267	6.689	6.498	6.480
Wester Moffat	7.444	7.356	7.044	7.622	7.333	7.360	7.359

Criterion	1	2	3	4	5
Unweighted (actual)	20	20	20	20	20
Weighted percentage	31.1	22.96	19.27	14.47	12.2
Weighting figure (tar)	1.555	1.148	0.9635	0.7235	0.61

AREA 2: COATBRIDGE PARTICIPANTS UNWEIGHTED TOTALS

URN	Weighting Area	CRITERION 1			CRITERION 2			CRITERION 3			CRITERION 4			CRITERION 5		
		GARTCOSH U	GLENMAVIS U	WESTER MOFFAT U	GARTCOSH U	GLENMAVIS U	WESTER MOFFAT U	GARTCOSH U	GLENMAVIS U	WESTER MOFFAT U	GARTCOSH U	GLENMAVIS U	WESTER MOFFAT U	GARTCOSH U	GLENMAVIS U	WESTER MOFFAT U
PA77444x	2	2	6	7	7	7	7	5	6	6	5	8	6	1	7	7
PB48632s	2	3	3	3	3	3	3	3	3	3	6	3	5	5	5	5
PG56260t	2	6	6	1	6	6	1	7	5	2	6	6	6	6	6	2
PG79325m	2	8	6	6	8	7	6	8	7	6	6	6	6	8	7	6
PJ28531x	2	1	5	9	1	5	9	1	7	9	9	3	1	5	9	9
PK64683z	2	3	4	6	5	4	6	6	5	5	4	2	9	2	6	8
PK65645v	2	4	5	8	4	6	9	5	5	7	8	7	7	8	7	9
PN94984j	2	6	5	4	7	6	6	9	7	6	7	3	4	9	7	4
PT21210x	2	4	3	7	4	3	8	5	6	8	2	2	9	4	5	8
PT82827f	2	9	4	5	7	4	5	8	6	4	9	8	9	9	6	5
PY63260q	2	8	4	4	8	4	4	8	5	5	8	5	4	7	5	5
PY89006p	2	8	3	6	3	8	9	9	5	5	9	3	4	1	5	9
<b>TOTAL</b>	<b>12</b>	<b>62</b>	<b>54</b>	<b>66</b>	<b>63</b>	<b>63</b>	<b>73</b>	<b>74</b>	<b>67</b>	<b>66</b>	<b>79</b>	<b>56</b>	<b>70</b>	<b>65</b>	<b>75</b>	<b>77</b>
<b>MEAN</b>		<b>5.166666667</b>	<b>4.5</b>	<b>5.5</b>	<b>5.25</b>	<b>5.25</b>	<b>6.083333333</b>	<b>6.166666667</b>	<b>5.583333333</b>	<b>5.5</b>	<b>6.583333333</b>	<b>4.666666667</b>	<b>5.833333333</b>	<b>5.416666667</b>	<b>6.25</b>	<b>6.416666667</b>
<b>SD</b>		<b>2.691175253</b>	<b>1.167748416</b>	<b>2.236067977</b>	<b>2.261335084</b>	<b>1.658312395</b>	<b>2.539088359</b>	<b>2.480224819</b>	<b>1.164500153</b>	<b>1.977142106</b>	<b>2.193309386</b>	<b>2.269694947</b>	<b>2.443296333</b>	<b>2.937479852</b>	<b>1.215431087</b>	<b>2.274696117</b>

MEANS

	Unweighted C1	Unweighted C2	Unweighted C3	Unweighted C4	Unweighted C5	Total unw crit mean	Total w crit mean
<b>Gartcosh</b>	5.167	5.250	6.167	6.583	5.417	5.717	5.614
<b>Glenmavis</b>	4.500	5.250	5.583	4.667	6.250	5.250	5.119
<b>Wester Moffat</b>	5.500	6.083	5.500	5.833	6.417	5.867	5.794

Criterion	1	2	3	4	5
Unweighted (actual)	20	20	20	20	20
Weighted percentage	31.1	22.96	19.27	14.47	12.2
Weighting figure (tar)	1.555	1.148	0.9635	0.7235	0.61

AREA 3: BELLSHILL PARTICIPANTS UNWEIGHTED TOTALS

URN	Weighting Area	CRITERION 1			CRITERION 2			CRITERION 3			CRITERION 4			CRITERION 5		
		GARTCOSH U	GLENMAVIS U	WESTER MOFFAT U	GARTCOSH U	GLENMAVIS U	WESTER MOFFAT U	GARTCOSH U	GLENMAVIS U	WESTER MOFFAT U	GARTCOSH U	GLENMAVIS U	WESTER MOFFAT U	GARTCOSH U	GLENMAVIS U	WESTER MOFFAT U
PK83766n	3	8	3	3	8	4	3	8	5	5	9	4	6	7	5	5
PQ16041r	3	7	4	7	7	4	7	5	7	7	7	6	7	5	5	5
PS37477g	3	5	7	2	5	7	7	5	5	5	8	7	7	6	6	4
PV82636h	3	9	4	4	9	4	5	9	4	4	9	8	8	9	8	5
<b>TOTAL</b>	<b>4</b>	<b>29</b>	<b>18</b>	<b>16</b>	<b>29</b>	<b>19</b>	<b>22</b>	<b>27</b>	<b>21</b>	<b>21</b>	<b>33</b>	<b>25</b>	<b>28</b>	<b>27</b>	<b>24</b>	<b>19</b>
<b>MEAN</b>		<b>7.25</b>	<b>4.5</b>	<b>4</b>	<b>7.25</b>	<b>4.75</b>	<b>5.5</b>	<b>6.75</b>	<b>5.25</b>	<b>5.25</b>	<b>8.25</b>	<b>6.25</b>	<b>7</b>	<b>6.75</b>	<b>6</b>	<b>4.75</b>
<b>SD</b>		<b>1.707825128</b>	<b>1.732050808</b>	<b>2.160246899</b>	<b>1.707825128</b>	<b>1.5</b>	<b>1.914854216</b>	<b>2.061552813</b>	<b>1.258305739</b>	<b>1.258305739</b>	<b>0.957427108</b>	<b>1.707825128</b>	<b>0.816496581</b>	<b>1.707825128</b>	<b>1.414213562</b>	<b>0.5</b>

MEANS

	Unweighted C1	Unweighted C2	Unweighted C3	Unweighted C4	Unweighted C5	Total unweighted mean	Total weighted mean
Gartcosh	7.250	7.250	6.750	8.250	6.750	7.250	7.237
Glenmavis	4.500	4.750	5.250	6.250	6.000	5.350	5.138
Wester Moffat	4.000	5.500	5.250	7.000	4.750	5.300	5.111

Criterion	1	2	3	4	5
Unweighted (actual)	20	20	20	20	20
Weighted percentage	31.1	22.96	19.27	14.47	12.2
Weighting figure (target)	1.555	1.148	0.9635	0.7235	0.61

AREA 4: CUMBERNAULD/KILSYTH PARTICIPANTS UNWEIGHTED TOTALS

URN	Weighting Area	CRITERION 1			CRITERION 2			CRITERION 3			CRITERION 4			CRITERION 5		
		GARTCOSH U	GLENMAVIS U	WESTER MOFFAT U	GARTCOSH U	GLENMAVIS U	WESTER MOFFAT U	GARTCOSH U	GLENMAVIS U	WESTER MOFFAT U	GARTCOSH U	GLENMAVIS U	WESTER MOFFAT U	GARTCOSH U	GLENMAVIS U	WESTER MOFFAT U
PA54723b	4	8	3	2	9	6	2	9	6	2	9	8	5	9	6	3
PB69714v	4	7	3	2	6	4	4	6	4	4	7	6	6	6	5	5
PB91589d	4	4	3	3	3	3	3	3	3	3	1	3	3	6	5	3
PB98341v	4	9	1	1	9	1	1	9	1	1	9	1	1	9	1	1
PC92998n	4	5	3	3	6	4	3	6	5	3	7	7	4	8	6	3
PD55196w	4	6	5	4	7	5	4	7	5	4	8	6	6	7	6	5
PF19076q	4	8	5	6	8	5	6	8	5	6	7	6	7	7	5	6
PF79235a	4	9	2	2	9	2	2	8	4	4	8	3	3	8	4	4
PH48448w	4	7	9	1	1	1	1	9	9	1	5	4	8	4	1	9
PH66288s	4	6	2	5	7	4	4	5	6	6	9	7	9	5	5	5
PH76303w	4	9	1	1	9	1	1	9	1	1	9	1	1	9	1	1
PJ92968r	4	8	7	6	8	7	6	8	7	6	7	7	7	6	7	8
PK80957n	4	9	6	7	9	6	7	9	7	7	9	6	5	9	6	4
PK82728u	4	7	5	4	7	5	4	8	5	3	7	4	4	8	6	3
PM31632p	4	8	3	3	9	6	5	7	6	6	5	5	5	9	5	3
PM36687d	4	9	5	4	8	4	4	9	4	4	7	6	7	8	8	8
PM48765v	4	2	6	2	2	6	2	2	6	2	5	5	2	3	4	3
PM79095q	4	9	3	2	9	3	2	6	4	4	8	6	1	6	7	8
PM84013j	4	8	5	5	8	5	5	9	5	4	7	5	5	8	5	5
PM84397w	4	8	4	5	8	3	4	7	5	5	8	3	2	7	3	3
PQ92706z	4	9	5	5	9	5	5	9	5	5	8	6	7	6	7	8
PQ97601y	4	8	7	3	6	6	4	8	5	5	9	2	6	7	7	6
PR85529p	4	9	2	3	9	2	3	8	2	2	7	2	3	4	5	6
PS55814a	4	7	2	4	7	2	4	9	2	6	9	1	3	3	4	7
PT32249x	4	8	4	5	6	3	4	8	3	3	8	4	6	5	6	8
PT77007y	4	9	5	3	9	5	3	7	7	5	6	5	5	6	6	5
PT81748x	4	9	5	4	9	6	5	9	6	4	8	4	5	9	6	5
PW60007e	4	8	5	4	8	5	4	8	5	4	6	6	6	7	5	5
PX66819f	4	9	7	7	8	6	6	9	7	6	8	5	6	8	6	4
PX77313d	4	8	2	4	8	2	4	9	5	5	8	5	6	9	6	6
PY68875q	4	1	6	6	1	6	5	5	5	5	2	2	9	1	9	9
PZ19662j	4	7	4	3	7	4	3	9	4	4	6	5	5	6	6	6
<b>TOTAL</b>	<b>32</b>	<b>238</b>	<b>135</b>	<b>119</b>	<b>229</b>	<b>133</b>	<b>120</b>	<b>242</b>	<b>154</b>	<b>130</b>	<b>227</b>	<b>146</b>	<b>158</b>	<b>213</b>	<b>169</b>	<b>165</b>
<b>MEAN</b>		<b>7.4375</b>	<b>4.21875</b>	<b>3.71875</b>	<b>7.15625</b>	<b>4.15625</b>	<b>3.75</b>	<b>7.5625</b>	<b>4.8125</b>	<b>4.0625</b>	<b>7.09375</b>	<b>4.5625</b>	<b>4.9375</b>	<b>6.65625</b>	<b>5.28125</b>	<b>5.15625</b>
<b>SD</b>		<b>1.998991681</b>	<b>1.929973675</b>	<b>1.670124102</b>	<b>2.329465881</b>	<b>1.74336299</b>	<b>1.524001524</b>	<b>1.812812821</b>	<b>1.785921647</b>	<b>1.625155079</b>	<b>1.906853091</b>	<b>1.916608227</b>	<b>2.184069891</b>	<b>2.057392258</b>	<b>1.835744992</b>	<b>2.186606961</b>

MEANS

	Unweighted C1	Unweighted C2	Unweighted C3	Unweighted C4	Unweighted C5	Total unw crit mean	Total w crit mean
<b>Gartcosh</b>	7.438	7.156	7.563	7.094	6.656	7.181	7.252
<b>Glenmavis</b>	4.219	4.156	4.813	4.563	5.281	4.606	4.498
<b>Wester Moffat</b>	3.719	3.750	4.063	4.938	5.156	4.325	4.144

Criterion	1	2	3	4	5
Unweighted (actual)	20	20	20	20	20
Weighted percentage	31.1	22.96	19.27	14.47	12.2
Weighting figure (tar)	1.555	1.148	0.9635	0.7235	0.61

AREA 5: VIEWPARK/UDDINGSTON PARTICIPANTS UNWEIGHTED TOTALS

URN	Weighting Area	CRITERION 1			CRITERION 2			CRITERION 3			CRITERION 4			CRITERION 5		
		GARTCOSH U	GLENMAVIS U	WESTER MOFFAT U	GARTCOSH U	GLENMAVIS U	WESTER MOFFAT U	GARTCOSH U	GLENMAVIS U	WESTER MOFFAT U	GARTCOSH U	GLENMAVIS U	WESTER MOFFAT U	GARTCOSH U	GLENMAVIS U	WESTER MOFFAT U
PC88435x	5	6	4	3	4	6	4	7	5	4	2	6	5	7	5	4
PG27347d	5	8	2	3	8	2	3	8	3	3	8	2	4	8	4	4
PG92066h	5	8	2	3	5	6	6	5	5	5	6	2	3	7	6	4
PK18523p	5	8	1	2	7	2	1	8	3	4	8	1	2	8	2	1
PY72286t	5	9	4	6	9	4	6	9	4	6	8	5	5	3	7	7
<b>TOTAL</b>	5	39	13	17	33	20	20	37	20	22	32	16	19	33	24	20
<b>MEAN</b>		7.8	2.6	3.4	6.6	4	4	7.4	4	4.4	6.4	3.2	3.8	6.6	4.8	4
<b>SD</b>		1.095445115	1.341640786	1.516575089	2.073644135	2	2.121320344	1.516575089	1	1.140175425	2.607680962	2.167948339	1.303840481	2.073644135	1.923538406	2.121320344

MEANS

	Unweighted C1	Unweighted C2	Unweighted C3	Unweighted C4	Unweighted C5	Total unw crit mean	Total w crit mean
<b>Gartcosh</b>	7.800	6.600	7.400	6.400	6.600	6.960	7.098
<b>Glenmavis</b>	2.600	4.000	4.000	3.200	4.800	3.720	3.546
<b>Wester Moffat</b>	3.400	4.000	4.400	3.800	4.000	3.920	3.862

Criterion	1	2	3	4	5
<b>Unweighted (actual)</b>	20	20	20	20	20
<b>Weighted percentage</b>	31.1	22.96	19.27	14.47	12.2
<b>Weighting figure (tar)</b>	1.555	1.148	0.9635	0.7235	0.61

AREA 6: WISHAW CATCHMENT PARTICIPANTS UNWEIGHTED TOTALS

URN	Weighting Area	CRITERION 1			CRITERION 2			CRITERION 3			CRITERION 4			CRITERION 5		
		GARTCOSH U	GLENMAVIS U	WESTER MOFFAT U	GARTCOSH U	GLENMAVIS U	WESTER MOFFAT U	GARTCOSH U	GLENMAVIS U	WESTER MOFFAT U	GARTCOSH U	GLENMAVIS U	WESTER MOFFAT U	GARTCOSH U	GLENMAVIS U	WESTER MOFFAT U
PA58354s	6	7	2	2	7	2	2	8	2	3	8	1	2	8	2	2
PA70949y	6	3	3	7	3	3	6	5	5	5	5	5	8	6	6	8
PB53954n	6	8	4	6	8	4	6	8	4	6	8	4	7	8	4	7
PC77629q	6	7	4	6	7	4	6	7	4	6	8	5	6	7	3	5
PD72798u	6	1	9	8	1	9	8	1	9	8	1	9	8	1	9	8
PG66439e	6	8	6	5	7	7	7	6	6	6	8	6	6	8	8	5
PJ63366k	6	7	3	2	6	5	4	7	4	3	7	3	5	6	3	5
PK39810b	6	1	2	7	1	2	7	1	1	1	1	1	7	1	2	8
PK45330h	6	6	4	5	6	3	5	8	6	7	7	5	5	7	4	5
PS46038g	6	9	4	7	9	5	6	9	4	4	9	2	4	5	6	8
PT10798b	6	8	6	4	8	6	4	8	7	6	7	7	6	8	7	7
<b>TOTAL</b>	<b>11</b>	<b>65</b>	<b>47</b>	<b>59</b>	<b>63</b>	<b>50</b>	<b>61</b>	<b>68</b>	<b>52</b>	<b>55</b>	<b>69</b>	<b>48</b>	<b>64</b>	<b>65</b>	<b>54</b>	<b>68</b>
<b>MEAN</b>		<b>5.909090909</b>	<b>4.272727273</b>	<b>5.363636364</b>	<b>5.727272727</b>	<b>4.545454545</b>	<b>5.545454545</b>	<b>6.181818182</b>	<b>4.727272727</b>	<b>5</b>	<b>6.272727273</b>	<b>4.363636364</b>	<b>5.818181818</b>	<b>5.909090909</b>	<b>4.909090909</b>	<b>6.181818182</b>
<b>SD</b>		<b>2.879393876</b>	<b>2.053821272</b>	<b>2.01359019</b>	<b>2.796101182</b>	<b>2.161649202</b>	<b>1.694912173</b>	<b>2.786330268</b>	<b>2.240129866</b>	<b>2.049390153</b>	<b>2.796101182</b>	<b>2.500908926</b>	<b>1.778661397</b>	<b>2.625054112</b>	<b>2.427119505</b>	<b>1.940009372</b>

MEANS

	Unweighted C1	Unweighted C2	Unweighted C3	Unweighted C4	Unweighted C5	Total unw crit mean	Total w crit mean
<b>Gartcosh</b>	5.909	5.727	6.182	6.273	5.909	6.000	5.973
<b>Glenmavis</b>	4.273	4.545	4.727	4.364	4.909	4.564	4.514
<b>Wester Moffat</b>	5.364	5.545	5.000	5.818	6.182	5.582	5.501

Criterion	1	2	3	4	5
<b>Unweighted (actual)</b>	20	20	20	20	20
<b>Weighted percentage</b>	31.1	22.96	19.27	14.47	12.2
<b>Weighting figure (tar)</b>	1.555	1.148	0.9635	0.7235	0.61

AREA 7: HAIRMYERS CATCHMENT PARTICIPANTS UNWEIGHTED TOTALS

URN	Weighting Area	CRITERION 1			CRITERION 2			CRITERION 3			CRITERION 4			CRITERION 5		
		GARTCOSH U	GLENMAVIS U	WESTER MOFFAT U	GARTCOSH U	GLENMAVIS U	WESTER MOFFAT U	GARTCOSH U	GLENMAVIS U	WESTER MOFFAT U	GARTCOSH U	GLENMAVIS U	WESTER MOFFAT U	GARTCOSH U	GLENMAVIS U	WESTER MOFFAT U
PB54213f	7	8	4	4	7	5	5	8	4	4	8	3	4	6	5	5
PN18684n	7	8	3	5	8	3	5	7	4	4	7	3	3	7	5	5
PN84751d	7	8	2	6	8	2	6	8	3	3	8	5	6	6	6	6
PS45476a	7	5	3	7	5	3	7	7	3	6	3	2	8	2	6	8
<b>TOTAL</b>	4	29	12	22	28	13	23	30	14	17	26	13	21	21	22	24
<b>MEAN</b>		7.25	3	5.5	7	3.25	5.75	7.5	3.5	4.25	6.5	3.25	5.25	5.25	5.5	6
<b>SD</b>		1.5	0.816496581	1.290994449	1.414213562	1.258305739	0.957427108	0.577350269	0.577350269	1.258305739	2.380476143	1.258305739	2.217355783	2.217355783	0.577350269	1.414213562

MEANS

	Unweighted C1	Unweighted C2	Unweighted C3	Unweighted C4	Unweighted C5	Total unw crit mean	Total w crit mean
Gartcosh	7.250	7.000	7.500	6.500	5.250	6.700	6.888
Glenmavis	3.000	3.250	3.500	3.250	5.500	3.700	3.495
Wester Moffat	5.500	5.750	4.250	5.250	6.000	5.350	5.341

Criterion	1	2	3	4	5
Unweighted (actual)	20	20	20	20	20
Weighted percentage	31.1	22.96	19.27	14.47	12.2
Weighting figure (tar)	1.555	1.148	0.9635	0.7235	0.61



CATEGORIES 8 & 9: STAFF SIDE REPRESENTATIVES UNWEIGHTED TOTALS

URN	Weighting Area	CRITERION 1			CRITERION 2			CRITERION 3			CRITERION 4			CRITERION 5		
		GARTCOSH U	GLENMAVIS U	WESTER MOFFAT U	GARTCOSH U	GLENMAVIS U	WESTER MOFFAT U	GARTCOSH U	GLENMAVIS U	WESTER MOFFAT U	GARTCOSH U	GLENMAVIS U	WESTER MOFFAT U	GARTCOSH U	GLENMAVIS U	WESTER MOFFAT U
SJ36235y	8	5	4	5	5	4	6	5	4	5	5	5	8	5	5	6
SN33463y	8	6	2	3	8	2	3	7	2	3	7	2	5	4	5	5
ST91228t	8	2	3	5	2	3	5	2	3	5	7	1	8	5	6	9
SU16227m	8	2	5	4	5	4	4	5	4	5	6	5	5	5	4	5
SV12751k	8	7	7	7	7	7	7	8	7	7	6	6	6	4	7	8
SY83278p	8	7	3	4	8	3	4	9	3	3	5	2	5	4	7	7
SA11272w	9															
SY29365z	9															
<b>TOTAL</b>	8	42	35	40	46	36	43	49	35	39	51	34	53	38	45	50
<b>MEAN</b>		5.25	4.375	5	5.75	4.5	5.375	6.125	4.375	4.875	6.375	4.25	6.625	4.75	5.625	6.25
<b>SD</b>		2.121320344	1.685018016	1.414213562	1.982062418	1.927248223	1.597989809	2.167124494	1.767766953	1.356202682	1.060660172	2.375469878	1.505940617	0.707106781	1.060660172	1.58113883

MEANS

	Unweighted C1	Unweighted C2	Unweighted C3	Unweighted C4	Unweighted C5	Total unw crit mean	Total w crit mean
Gartcosh	5.250	5.750	6.125	6.375	4.750	5.650	5.635
Glenmavis	4.375	4.500	4.375	4.250	5.625	4.625	4.538
Wester Moffat	5.000	5.375	4.875	6.625	6.250	5.625	5.450

Criterion	1	2	3	4	5
Unweighted (actual)	20	20	20	20	20
Weighted percentage	31.1	22.96	19.27	14.47	12.2
Weighting figure (tar)	1.555	1.148	0.9635	0.7235	0.61

CATEGORIES 10-13: UH MONKLANDS UNWEIGHTED TOTALS

ID	Weighting Area	CRITERION 1			CRITERION 2			CRITERION 3			CRITERION 4			CRITERION 5		
		GARTCOSH U	GLENNALVUS U	WESTER MOFFAT U	GARTCOSH U	GLENNALVUS U	WESTER MOFFAT U	GARTCOSH U	GLENNALVUS U	WESTER MOFFAT U	GARTCOSH U	GLENNALVUS U	WESTER MOFFAT U	GARTCOSH U	GLENNALVUS U	WESTER MOFFAT U
SP4341v																
SC3529k	11	7	8	8	9	6	6	8	6	6	7	6	6	8	5	5
SC3581w	11	8	4	5	8	3	5	8	5	5	8	6	6	6	6	7
SC3883y	11	8	1	2	9	1	2	9	1	1	8	1	2	9	1	3
SD5295z	11	6	4	5	8	4	5	8	4	5	6	6	6	6	7	7
SE2007n	11	8	2	7	9	2	8	9	3	8	6	7	8	8	8	5
SF3762q	11	7	4	5	7	3	4	8	4	4	7	4	4	6	6	6
SF7815r	11	8	1	3	8	2	4	9	6	6	8	1	2	6	4	5
SF2638p	11	7	3	8	8	5	4	8	7	5	7	1	7	4	5	6
SM9166m	11	8	4	6	9	1	5	9	4	4	7	1	1	4	5	6
SP14142x	11	6	5	8	8	5	6	9	7	7	4	2	6	4	6	8
SP2999v	11	8	5	6	7	5	5	9	6	6	8	5	8	8	8	8
SP61225a	11	8	5	5	8	5	8	5	3	3	6	6	6	6	5	5
SP89176c	11	8	2	2	8	1	2	8	1	2	1	7	1	4	6	1
SW7290f	11	3	3	3	8	5	4	8	4	3	8	8	8	8	5	5
SV8131z	11	9	1	1	9	1	1	9	2	2	9	1	1	9	5	5
SF62487r	12	8	3	4	8	3	4	9	4	4	8	4	4	7	5	2
SH11194u	12	7	6	6	7	6	6	9	6	6	9	8	7	8	7	7
SH17238t	12	1	6	4	1	5	4	2	5	4	2	5	4	1	6	6
SM96953k	12	3	6	6	3	7	8	5	6	7	7	6	3	1	6	9
SN39963v	12	4	4	4	5	4	4	5	4	3	5	5	5	4	6	6
SU41838h	12	6	5	5	4	5	5	6	5	5	6	5	5	4	6	6
SV28924d	12	8	7	5	8	7	5	8	7	5	8	6	9	8	7	5
SB16078a	13	1	8	8	1	9	9	1	7	8	1	7	7	1	9	9
SG41777a	13	6	7	7	4	5	5	8	7	7	5	5	5	4	7	7
SM15544b	13	9	3	3	9	2	2	9	3	3	9	3	3	7	6	6
SN31406c	13	1	3	3	8	1	7	8	1	6	8	2	7	1	9	9
SP62735e	13	8	5	6	8	5	8	6	4	4	8	5	5	7	7	7
SB15487v	13	7	6	7	7	6	7	8	6	6	8	7	7	7	8	8
ST10275w	13	4	7	5	4	5	4	3	4	5	6	4	2	2	7	5
SU16719i	13	2	3	8	1	3	7	3	4	4	8	2	6	4	3	5
TOTAL		192	134	162	202	139	154	221	141	147	198	141	138	172	179	188
MEAN		6.193488387	4.327886545	5.225806452	6.516126032	4.161280513	4.967741895	7.129032258	4.548382097	4.741935484	6.387096774	4.548382097	5.096774194	5.548382097	5.774193748	6.064516129
ID		2.495587504	2.060441451	1.927188517	2.766224958	2.067552215	1.816294231	2.617147754	1.709556266	1.879144166	2.319418271	2.1572587	2.119036136	2.487849791	1.94438812	1.806200198

MEANS							
	Unweighted C1	Unweighted C2	Unweighted C3	Unweighted C4	Unweighted C5	Total unw crit mean	Total w crit mean
Gartcosh	6.194	6.516	7.129	6.387	5.548	6.355	6.397
Glenmalv	4.323	4.161	4.548	4.548	5.774	4.671	4.539
Wester Moffat	5.226	4.968	4.742	5.097	6.065	5.219	5.157

Criterion	1	2	3	4	5
Unweighted (actual)	20	20	20	20	20
Weighted percentage	31.1	29.96	19.27	14.47	14.47
Weighting figure (rat)	1.555	1.148	0.9635	0.7235	0.61

CATEGORY 11: UH MONKLANDS MEDICAL UNWEIGHTED TOTALS

ID	Weighting Area	CRITERION 1			CRITERION 2			CRITERION 3			CRITERION 4			CRITERION 5		
		GARTCOSH U	GLENNALVUS U	WESTER MOFFAT U	GARTCOSH U	GLENNALVUS U	WESTER MOFFAT U	GARTCOSH U	GLENNALVUS U	WESTER MOFFAT U	GARTCOSH U	GLENNALVUS U	WESTER MOFFAT U	GARTCOSH U	GLENNALVUS U	WESTER MOFFAT U
SC3132b	11	8	8	8	8	8	8	8	8	8	8	8	8	8	8	8
SC3581w	11	8	4	6	8	3	6	8	5	5	7	6	6	6	6	7
SC3883y	11	8	1	2	9	1	2	9	1	1	8	1	2	9	1	3
SD5295z	11	6	4	5	8	4	5	8	4	5	6	6	6	6	7	7
SE2007n	11	8	2	7	9	2	6	9	3	3	8	6	7	8	8	8
SF3762q	11	7	4	5	7	3	4	8	4	4	7	4	4	6	6	6
SF7815r	11	8	1	3	8	2	4	9	6	6	8	1	2	6	4	5
SF2638p	11	7	3	4	8	3	4	8	3	4	5	3	7	5	3	6
SM9166m	11	8	4	6	9	1	5	9	4	4	7	1	1	4	5	6
SP14142x	11	6	5	8	8	5	6	9	7	7	4	2	6	4	6	8
SP2999v	11	8	5	6	7	5	5	9	6	6	8	5	8	8	8	8
SP61225a	11	8	5	5	8	5	8	5	3	3	6	6	6	6	5	5
SP89176c	11	8	2	2	8	1	2	8	1	2	7	1	7	1	4	2
SW7290f	11	3	3	3	8	5	4	8	4	3	8	8	8	8	5	5
SV8131z	11	9	1	1	9	1	1	9	2	2	9	1	1	9	5	5
TOTAL	15	109	52	71	123	47	65	126	60	60	108	67	74	101	75	86
MEAN		7.266666667	3.466666667	4.733333333	6.92	3.133333333	4.333333333	8.333333333	3.933333333	3.933333333	6.72	3.8	4.933333333	6.233333333	5	5.733333333
ID		1.437590577	1.92330209	2.18658905	0.676123404	1.767430203	1.58860221	0.516397778	1.830950813	1.8516402	1.320173149	2.48426014	2.433897739	1.667618776	2.304417123	1.751190072

MEANS: MONKLANDS MEDICAL							
	Unweighted C1	Unweighted C2	Unweighted C3	Unweighted C4	Unweighted C5	Total unw crit mean	Total w crit mean
Gartcosh	7.267	8.200	8.533	7.200	6.733	7.587	7.650
Glenmalv	3.467	3.133	3.933	3.800	5.000	3.867	3.715
Wester Moffat	4.733	4.333	4.000	4.933	5.733	4.747	4.651

CATEGORY 12: UH MONKLANDS NURSING UNWEIGHTED TOTALS

ID	Weighting Area	CRITERION 1			CRITERION 2			CRITERION 3			CRITERION 4			CRITERION 5		
		GARTCOSH U	GLENNALVUS U	WESTER MOFFAT U	GARTCOSH U	GLENNALVUS U	WESTER MOFFAT U	GARTCOSH U	GLENNALVUS U	WESTER MOFFAT U	GARTCOSH U	GLENNALVUS U	WESTER MOFFAT U	GARTCOSH U	GLENNALVUS U	WESTER MOFFAT U
SF42487r	12	4	4	4	4	4	4	4	4	4	4	4	4	4	4	4
SH11194u	12	7	6	6	7	6	6	9	6	6	9	8	7	8	7	7
SH17238t	12	1	6	4	1	5	4	2	5	4	2	5	4	1	6	6
SM96953k	12	3	6	6	3	7	8	5	6	7	7	6	3	1	6	9
SN39963v	12	4	4	4	5	4	4	5	4	3	5	5	5	4	6	6
SU41838h	12	6	5	5	4	5	5	6	5	5	6	5	5	4	6	6
SV28924d	12	8	7	5	8	7	5	8	7	5	8	6	9	8	7	5
TOTAL	7	37	37	34	36	37	36	44	37	34	45	39	37	33	43	41
MEAN		5.285714286	5.285714286	4.857142857	5.142857143	5.285714286	5.285714286	5.857142857	5.285714286	4.857142857	6.428571429	5.571428571	5.285714286	4.714285714	6.142857143	5.857142857
ID		2.690708837	1.380131119	0.899735431	2.672612419	1.496202683	1.463850109	2.562479778	1.112697261	1.851854418	2.470453041	1.272418011	2.058663459	3.039423508	0.690806559	2.115700943

MEANS: MONKLANDS NURSING							
	Unweighted C1	Unweighted C2	Unweighted C3	Unweighted C4	Unweighted C5	Total unw crit mean	Total w crit mean
Gartcosh	5.286	5.143	4.286	4.429	4.714	5.271	5.541
Glenmalv	5.286	5.286	5.286	5.271	6.143	5.514	5.452
Wester Moffat	4.857	5.143	4.857	5.286	5.857	5.300	5.167

CATEGORY 13: UH MONKLANDS OTHER UNWEIGHTED TOTALS

ID	Weighting Area	CRITERION 1			CRITERION 2			CRITERION 3			CRITERION 4			CRITERION 5		
		GARTCOSH U	GLENNALVUS U	WESTER MOFFAT U	GARTCOSH U	GLENNALVUS U	WESTER MOFFAT U	GARTCOSH U	GLENNALVUS U	WESTER MOFFAT U	GARTCOSH U	GLENNALVUS U	WESTER MOFFAT U	GARTCOSH U	GLENNALVUS U	WESTER MOFFAT U
SB16078a	13	1	8	8	1	9	9	1	7	8	1	7	1	9	9	9
SG41777a	13	6	7	7	7	4	5	8	7	3	6	5	5	4	7	7
SM15544b	13	9	3	3	9	2	2	9	3	3	9	3	3	7	6	6
SN31406c	13	1	3	3	8	1	6	8	1	6	8	2	7	1	9	9
SP62735e	13	8	5	6	8	5	6	9	4	4	8	5	5	7	7	7
SB15487v	13	7	6	7	7	6	7	8	6	6	8	7	7	7	8	8
ST10275w	13	4	7	5	4	5	4	3	4	5	6	4	2	2	7	5
SU16719i	13	2	3	8	1	3	7	3	4	4	8	2	6	4	3	5
TOTAL	8	38	41	41	35	41	48	41	40	48	48	40	40	43	56	56
MEAN		4.75	5.125	6.5	4.375	5.375	6	5.125	5	6	5	5	5.375	4.125	7	7
ID		3.195979617	2.232074227	1.772810521	3.29230705	2.356601669	2.26776838	3.68157544	1.772810521	1.927248223	3.29017884	1.927248223	1.908627011	2.642374473	1.927248223	1.603567451

MEANS: MONKLAND						
-----------------	--	--	--	--	--	--

CATEGORIES 14-17: UH HAIRMYERS UNWEIGHTED TOTALS

URN	Weighting Area	CRITERION 1			CRITERION 2			CRITERION 3			CRITERION 4			CRITERION 5		
		GARTCOSH U	GLENMAVIS U	WESTER MOFFAT U	GARTCOSH U	GLENMAVIS U	WESTER MOFFAT U	GARTCOSH U	GLENMAVIS U	WESTER MOFFAT U	GARTCOSH U	GLENMAVIS U	WESTER MOFFAT U	GARTCOSH U	GLENMAVIS U	WESTER MOFFAT U
SD30386x	14															
SF50783h	15	7	2	3	7	2	3	8	2	2	7	5	6	7	6	5
SF88435y	15	5	5	5	5	5	5	5	5	5	5	5	5	3	3	3
SQ11329r	15	9	3	2	9	2	2	9	2	3	9	2	2	5	5	5
SP20328d	16	7	3	2	8	4	2	8	4	3	8	2	2	7	8	8
SP79027c	16															
SG16708y	17															
<b>TOTAL</b>	7	48	22	25	48	21	24	52	27	28	50	25	29	40	39	38
<b>MEAN</b>		6.857142857	3.142857143	3.571428571	6.857142857	3	3.428571429	7.428571429	3.857142857	4	7.142857143	3.571428571	4.142857143	5.714285714	5.571428571	5.428571429
<b>SD</b>		1.345185418	1.069044968	1.397276262	1.573591585	1.414213562	1.511857892	1.272418021	1.345185418	1.414213562	1.345185418	1.718249386	1.67616342	1.496026483	1.511857892	1.511857892

MEANS

	Unweighted C1	Unweighted C2	Unweighted C3	Unweighted C4	Unweighted C5	Total unw crit mean	Total w crit mean
<b>Gartcosh</b>	6.857	6.857	7.429	7.143	5.714	6.800	6.869
<b>Glenmavis</b>	3.143	3.000	3.857	3.571	5.571	3.829	3.606
<b>Wester Moffat</b>	3.571	3.429	4.000	4.143	5.429	4.114	3.930

Criterion	1	2	3	4	5
<b>Unweighted (actual)</b>	20	20	20	20	20
<b>Weighted percentage</b>	31.1	22.96	19.27	14.47	12.2
<b>Weighting figure (tar)</b>	1.555	1.148	0.9635	0.7235	0.61

CATEGORIES 18-21: UH WISHAW UNWEIGHTED TOTALS

URN	Weighting Area	CRITERION 1			CRITERION 2			CRITERION 3			CRITERION 4			CRITERION 5		
		GARTCOSH U	GLENMAVIS U	WESTER MOFFAT U	GARTCOSH U	GLENMAVIS U	WESTER MOFFAT U	GARTCOSH U	GLENMAVIS U	WESTER MOFFAT U	GARTCOSH U	GLENMAVIS U	WESTER MOFFAT U	GARTCOSH U	GLENMAVIS U	WESTER MOFFAT U
SP80459u	18															
SE29567d	19	1	4	9	2	4	9	5	5	6	2	1	9	1	3	9
SP14238z	19	8	6	6	8	3	4	9	5	5	8	4	4	8	6	6
SQ52661u	19	8	5	7	8	6	7	8	7	7	7	7	8	4	2	4
SX59548a	19	8	4	6	8	4	6	8	6	7	7	6	7	7	7	8
SA19672y	20															
SP60856r	20															
SC64888s	21															
SP87319s	21															
<b>TOTAL</b>	9	59	40	54	57	43	53	63	47	50	58	45	61	45	41	54
<b>MEAN</b>		6.555555556	4.444444444	6	6.333333333	4.777777778	5.888888889	7	5.222222222	5.555555556	6.444444444	5	6.777777778	5	4.555555556	6
<b>SD</b>		2.351122663	0.881917104	1.802775638	2.061552813	1.481365736	1.900292375	1.414213562	1.394433378	1.424000624	1.810463415	2.179449472	1.787300882	2.179449472	1.943650632	1.870828693

MEANS

	Unweighted C1	Unweighted C2	Unweighted C3	Unweighted C4	Unweighted C5	Total unweighted mean	Total weighted mean
<b>Gartcosh</b>	6.556	6.333	7.000	6.444	5.000	6.267	6.384
<b>Glenmavis</b>	4.444	4.778	5.222	5.000	4.556	4.800	4.765
<b>Wester Moffat</b>	6.000	5.889	5.556	6.778	6.000	6.044	6.001

Criterion	1	2	3	4	5
Unweighted (actual)	20	20	20	20	20
Weighted percentage	31.1	22.96	19.27	14.47	12.2
Weighting figure (target)	1.555	1.148	0.9635	0.7235	0.61

CATEGORIES 22 & 23: HEALTH & SOCIAL CARE PARTNERSHIPS UNWEIGHTED TOTALS

URN	Weighting Area	CRITERION 1			CRITERION 2			CRITERION 3			CRITERION 4			CRITERION 5		
		GARTCOSH U	GLENMAVIS U	WESTER MOFFAT U	GARTCOSH U	GLENMAVIS U	WESTER MOFFAT U	GARTCOSH U	GLENMAVIS U	WESTER MOFFAT U	GARTCOSH U	GLENMAVIS U	WESTER MOFFAT U	GARTCOSH U	GLENMAVIS U	WESTER MOFFAT U
SB24220c	22	8	5	5	8	5	5	9	4	3	8	4	3	9	5	4
SE24233e	22	7	3	7	8	3	7	7	2	7	5	3	8	2	5	8
SH22942d	22	5	8	3	3	8	6	5	7	4	4	8	6	3	7	7
SM18349c	22	1	8	8	1	8	8	7	6	6	4	4	4	1	8	8
SQ77488y	22	7	3	4	7	3	4	6	4	4	8	2	3	7	5	4
SF54837y	23	7	4	5	7	4	5	7	5	5	8	4	4	7	5	6
SJ76201z	23	4	8	6	5	9	8	5	8	8	4	8	9	8	8	8
SK27940r	23	7	2	3	8	2	2	9	2	2	8	2	3	6	6	6
<b>TOTAL</b>	<b>8</b>	<b>46</b>	<b>41</b>	<b>41</b>	<b>47</b>	<b>42</b>	<b>45</b>	<b>55</b>	<b>38</b>	<b>39</b>	<b>49</b>	<b>35</b>	<b>40</b>	<b>43</b>	<b>49</b>	<b>51</b>
<b>MEAN</b>		<b>5.75</b>	<b>5.125</b>	<b>5.125</b>	<b>5.875</b>	<b>5.25</b>	<b>5.625</b>	<b>6.875</b>	<b>4.75</b>	<b>4.875</b>	<b>6.125</b>	<b>4.375</b>	<b>5</b>	<b>5.375</b>	<b>6.125</b>	<b>6.375</b>
<b>SD</b>		2.314550249	2.531938839	1.807721534	2.642374473	2.712405364	2.065879266	1.552647509	2.187627547	2.031009601	2.031009601	2.386719207	2.390457219	2.973093627	1.356202682	1.685018016

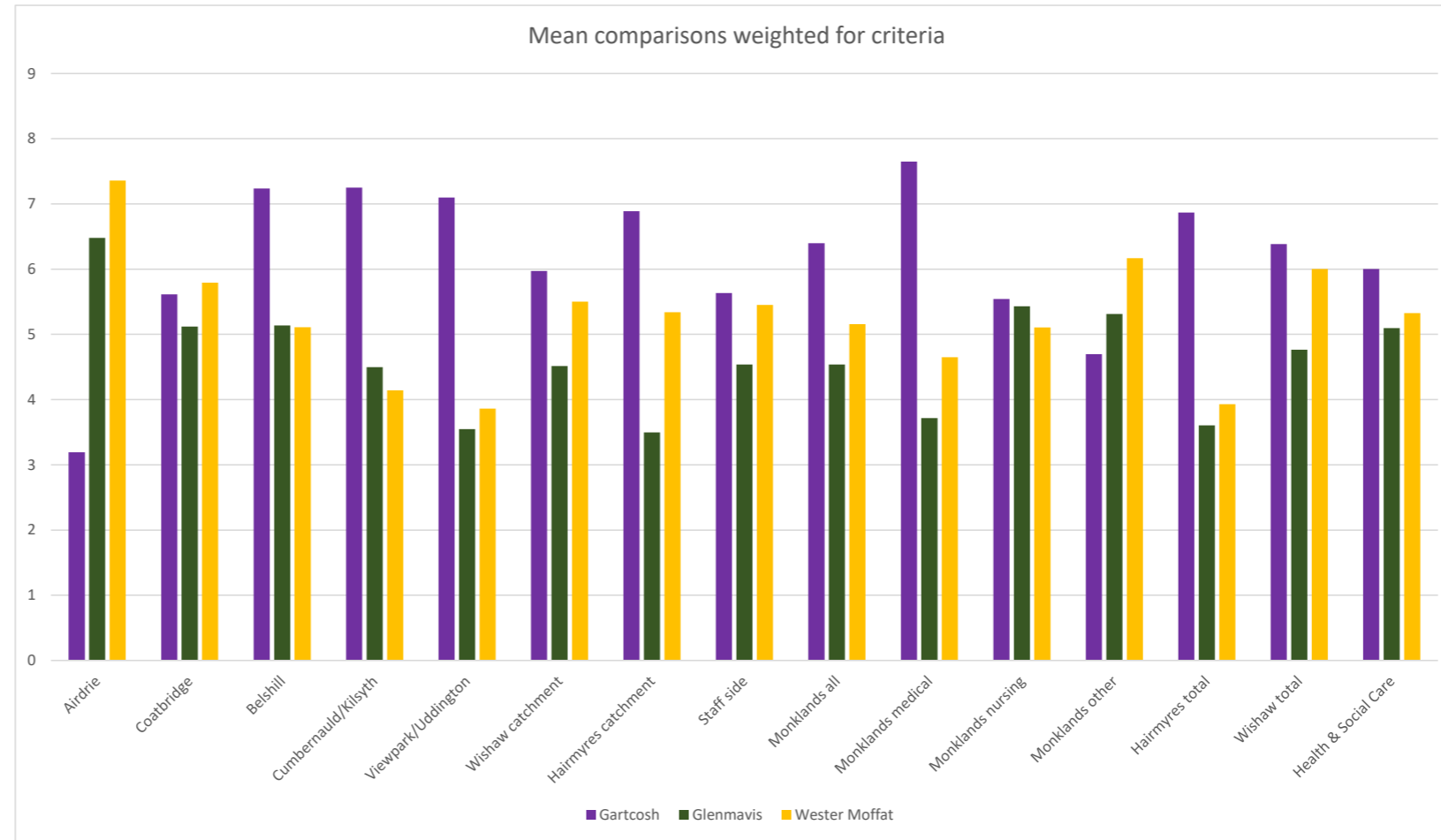
MEANS

	Unweighted C1	Unweighted C2	Unweighted C3	Unweighted C4	Unweighted C5	Total unw crit mean	Total w crit mean
<b>Gartcosh</b>	5.750	5.875	6.875	6.125	5.375	6.000	6.004
<b>Glenmavis</b>	5.125	5.250	4.750	4.375	6.125	5.125	5.095
<b>Wester Moffat</b>	5.125	5.625	4.875	5.000	6.375	5.400	5.326

Criterion	1	2	3	4	5
Unweighted (actual)	20	20	20	20	20
Weighted percentage	31.1	22.96	19.27	14.47	12.2
Weighting figure (tar)	1.555	1.148	0.9635	0.7235	0.61

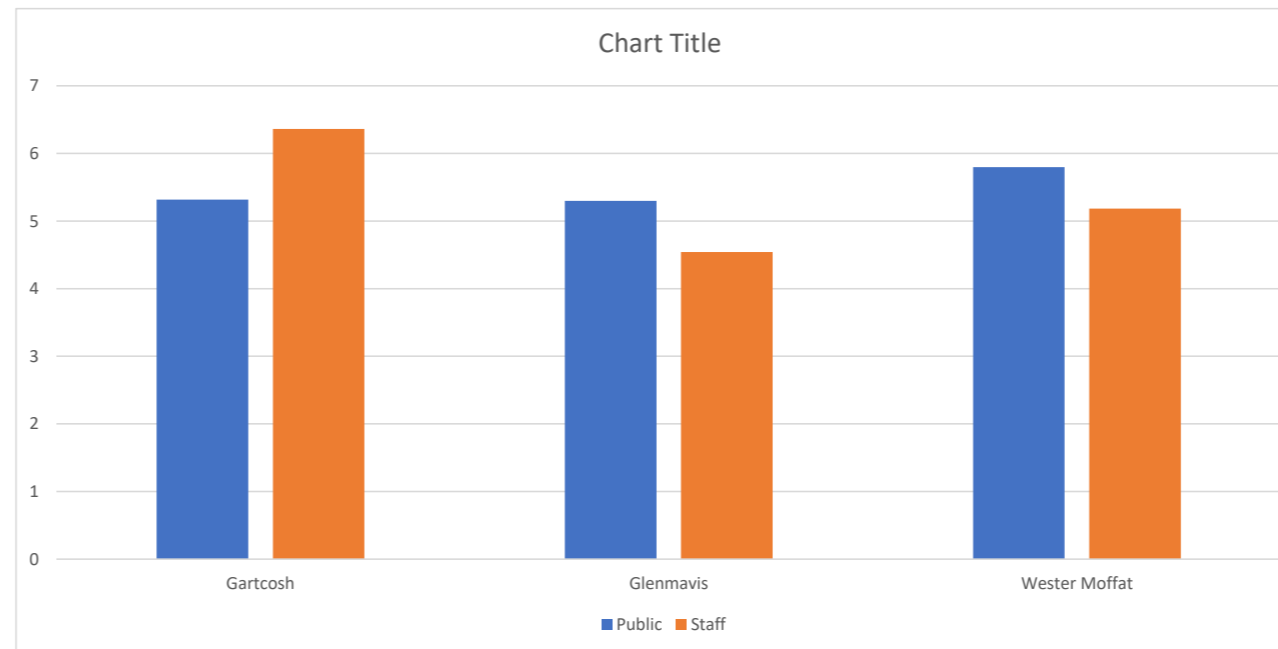
Weighted categories

	Gartcosh	Glenmavis	Wester Moffat
Airdrie	3.192	6.48	7.359
Coatbridge	5.614	5.119	5.794
Belshill	7.237	5.138	5.111
Cumbernauld/Kilsyth	7.252	4.498	4.144
Viewpark/Uddington	7.098	3.546	3.862
Wishaw catchment	5.973	4.514	5.501
Hairmyres catchment	6.888	3.495	5.341
Staff side	5.635	4.538	5.45
Monklands all	6.397	4.539	5.157
Monklands medical	7.65	3.715	4.651
Monklands nursing	5.541	5.432	5.107
Monklands other	4.696	5.312	6.169
Hairmyres total	6.869	3.606	3.93
Wishaw total	6.384	4.765	6.001
Health & Social Care	6.004	5.095	5.326



Weighted public staff

	Gartcosh	Glenmavis	Wester Moffat
Public	5.316	5.3	5.796
Staff	6.362	4.541	5.184



CRITERIA 1 & 2 REMOVED

	Participants weighted C1	Participants weighted C2	Participants weighted C3	Participants weighted C4	Participants weighted C5	Total weighted participants unweighted criteria	Total weighted participants weighted criteria	Total weighted participants unweighted criteria mean	Total weighted participants weighted criteria mean
Gartloch	0	0	1163.718633	1104.66695	958.2082102	3226.593802	2525.139951	6.042681277	4.091215833
Glemmains	0	0	884.1723901	846.4771829	1019.461529	2748.111042	3081.856814	5.138784222	3.898626207
Wester Mofet	0	0	905.9487024	1027.089597	1009.396115	2942.434415	2280.087903	5.601895613	4.232292113

Criterion	1	2	3	4	5
Unweighted actual %	20	20	20	20	20
Weighted percentage required	31.1	22.86	19.27	14.67	12.2
Weighting factors (unweighted)	1.555	1.143	0.9631	0.7335	0.61







UNWEIGHTED TOTALS MINUS TOP SCORING STAFF - WESTER MOFFAT

Table with columns: Department, Criterion 1 (Literacy, Numeracy), Criterion 2 (Professional Skills, Specialist Skills), Criterion 3 (Teamwork, Communication), Criterion 4 (Quality of Work, Customer Service), Criterion 5 (Leadership, Innovation). Rows list various staff members and their scores across these criteria.

Summary table for 'MINUS' section showing Total, Average, and Total w/out minus for various departments: Dept, Office, and Training.

Summary table for 'MINUS' section showing Total, Average, and Total w/out minus for various departments: Dept, Office, and Training.

Summary table for 'MINUS' section showing Total, Average, and Total w/out minus for various departments: Dept, Office, and Training.



URN	Weighting Area	GARTCOSH U	GLENMAVIS U	WESTER MOFFAT U	GARTCOSH U	GLENMAVIS U	WESTER MOFFAT U	GARTCOSH U	GLENMAVIS U	WESTER MOFFAT U	GARTCOSH U	GLENMAVIS U	WESTER MOFFAT U	GARTCOSH U	GLENMAVIS U	WESTER MOFFAT U	GARTCOSH	GLENMAVIS	WM	TOTAL
SP89379c	11	8	2	2	8	1	2	9	1	1	7	1	4	6	1	2	38	6	11	55
SH37230k	12	1	6	4	1	5	4	2	5	4	2	5	4	1	6	6	7	27	22	56
SU16719s	13	2	2	8	1	2	7	2	4	8	1	2	6	4	3	5	10	13	34	57
SC63883y	11	8	1	2	9	1	2	9	1	1	8	1	2	9	1	3	43	5	10	58
SN33463y	8	6	2	3	8	2	3	7	2	3	7	2	5	4	5	5	32	13	19	64
SY81535t	11	9	1	1	9	1	1	9	2	2	9	1	1	9	5	5	45	10	10	65
SD30386x	14																			
ST91228t	8	2	3	5	2	3	5	2	3	5	7	1	8	5	6	9	18	16	32	66
ST10275w	13	4	7	5	4	5	4	3	4	5	6	4	2	2	7	5	19	27	21	67
SK27940r	23	7	2	3	8	2	2	9	2	2	8	2	3	6	6	6	38	14	16	68
SN39963v	12	4	4	4	5	4	4	5	4	3	5	5	5	4	6	6	23	23	22	68
SU16227m	8	2	5	4	5	4	4	5	4	5	6	5	5	5	4	5	23	22	23	68
SQ11329r	15	9	3	2	9	2	2	9	2	3	9	2	2	5	5	5	41	14	14	69
SF88435y	15	5	5	5	5	5	5	5	5	5	5	5	5	3	3	3	23	23	23	69
SE29567d	19	1	4	9	2	4	9	5	5	6	2	1	9	1	3	9	11	17	42	70
SQ77488y	22	7	3	4	7	3	4	6	4	4	8	2	3	7	5	4	35	17	19	71
SF50783h	15	7	2	3	7	2	3	8	2	2	7	5	6	7	6	5	36	17	19	72
SA19672y	20	5	3	3	5	3	3	6	3	3	8	6	8	6	5	5	30	20	22	72
SF78519y	11	8	1	3	8	2	4	9	6	6	8	1	2	6	4	5	39	14	20	73
SK29638r	11	7	3	4	8	3	4	8	3	4	5	3	7	5	3	6	33	15	25	73
SM91668m	11	8	4	6	9	1	5	9	4	4	7	1	1	4	5	6	37	15	22	74
SY83278p	8	7	3	4	8	3	4	9	3	3	5	2	5	4	7	7	33	18	23	74
SC64888s	21	7	4	4	5	4	4	5	4	5	6	6	6	6	5	4	29	23	23	75
SM15544b	13	9	3	3	9	2	2	9	2	3	9	3	3	7	6	6	43	16	17	76
SP20328d	16	7	3	2	8	4	2	8	4	3	8	2	2	7	8	8	38	21	17	76
SP87319s	21	6	5	5	6	6	6	7	4	4	7	2	4	3	4	7	29	21	26	76
SF62487r	12	8	3	4	8	3	4	9	4	4	8	4	4	7	5	2	40	19	18	77
SI36235y	8	5	4	5	5	4	6	5	4	5	5	5	8	5	6	6	25	22	30	77
SU41838h	12	6	5	5	4	5	5	6	5	5	6	5	5	4	6	6	26	26	26	78
SN31406c	13	1	3	8	1	7	8	1	6	8	2	7	7	1	9	9	6	32	40	78
SF37629k	11	7	4	5	7	3	4	8	4	4	7	4	4	6	6	6	35	21	23	79
SG16708y	17	8	3	5	8	3	5	8	5	5	7	2	4	5	5	6	36	18	25	79
SH14434s	24																			
SP44341r	10																			
SM18349c	22	1	8	8	1	8	8	7	6	6	4	4	4	1	8	8	14	34	34	82
SE24233e	22	7	3	7	8	3	7	7	2	7	5	3	8	2	5	8	29	16	37	82
SW27300f	11	3	3	3	8	5	4	8	4	3	8	8	8	8	5	5	35	25	23	83
SF54837y	23	7	4	5	7	4	5	7	5	5	8	4	4	7	5	6	36	22	25	83
SM96953k	12	3	6	6	3	7	8	5	6	7	7	6	3	1	6	9	19	31	33	83
SH22942d	22	5	8	3	8	3	8	6	5	7	4	8	6	3	7	7	20	38	26	84
SB24220c	22	8	5	5	8	5	5	9	4	3	8	4	3	9	5	4	42	23	20	85
SP79027c	16	6	4	5	6	4	5	7	5	6	8	6	6	6	6	6	33	25	28	86
SB16078x	13	1	8	8	1	9	9	1	7	8	1	7	7	1	9	9	5	40	41	86
SD52953c	11	6	4	5	8	4	5	8	4	5	6	6	6	6	7	7	34	25	28	87
SP63225a	11	8	5	5	8	5	5	8	3	3	8	6	6	8	5	5	40	24	24	88
SG41777a	13	6	7	7	4	5	5	8	7	6	5	5	5	4	7	7	27	31	30	88
SP14238z	19	8	6	6	8	3	4	9	5	5	8	4	4	8	6	6	41	24	25	90
SY29365z	9	7	5	5	7	7	7	7	6	5	7	5	8	6	6	5	32	29	30	91
SP14142x	11	6	5	8	8	5	6	9	7	7	4	2	6	4	8	8	31	25	35	91
SC55816w	11	8	4	6	8	3	6	8	5	5	8	6	6	6	7	7	38	24	30	92
SP68735n	13	8	5	6	8	5	6	9	4	4	8	5	5	7	7	7	40	26	28	94
SE22007n	11	8	2	7	9	2	6	9	3	3	8	6	7	8	8	8	42	21	31	94
SG43321g	24																			
SP80459u	18																			
SQ52661u	19	8	5	7	8	6	7	8	7	7	7	7	8	4	4	4	35	27	33	95
SA11272w	9	6	6	7	6	6	7	6	6	6	8	8	8	5	5	5	31	31	33	95
SP60856r	20	8	4	7	7	7	7	7	6	6	6	6	7	6	7	7	34	30	34	98
SX59548a	19	8	4	6	8	4	6	8	6	7	7	6	7	7	7	8	38	27	34	99
SC35326k	11	7	8	8	9	6	6	8	6	6	7	6	6	8	5	5	39	31	31	101
SV12751k	8	7	7	7	7	7	7	8	7	7	6	6	6	4	7	8	32	34	35	101
SP28999r	11	8	5	6	7	5	5	9	6	6	8	5	8	8	8	8	40	29	33	102
SY29392d	12	8	7	5	8	7	5	8	7	5	8	6	9	8	7	5	40	34	29	103
SH11194u	12	7	6	6	7	6	6	9	6	6	9	8	7	8	7	7	40	33	32	105
SR15487z	13	7	6	7	7	6	7	8	6	6	8	7	7	7	8	8	37	33	35	105
SI76201z	23	4	8	6	5	9	8	5	8	8	4	8	9	8	8	8	26	41	39	106



Year	Month	Day	Event
1950	1	1	...
1950	1	2	...
1950	1	3	...
1950	1	4	...
1950	1	5	...
1950	1	6	...
1950	1	7	...
1950	1	8	...
1950	1	9	...
1950	1	10	...
1950	1	11	...
1950	1	12	...
1950	2	1	...
1950	2	2	...
1950	2	3	...
1950	2	4	...
1950	2	5	...
1950	2	6	...
1950	2	7	...
1950	2	8	...
1950	2	9	...
1950	2	10	...
1950	2	11	...
1950	2	12	...
1950	3	1	...
1950	3	2	...
1950	3	3	...
1950	3	4	...
1950	3	5	...
1950	3	6	...
1950	3	7	...
1950	3	8	...
1950	3	9	...
1950	3	10	...
1950	3	11	...
1950	3	12	...
1950	4	1	...
1950	4	2	...
1950	4	3	...
1950	4	4	...
1950	4	5	...
1950	4	6	...
1950	4	7	...
1950	4	8	...
1950	4	9	...
1950	4	10	...
1950	4	11	...
1950	4	12	...
1950	5	1	...
1950	5	2	...
1950	5	3	...
1950	5	4	...
1950	5	5	...
1950	5	6	...
1950	5	7	...
1950	5	8	...
1950	5	9	...
1950	5	10	...
1950	5	11	...
1950	5	12	...
1950	6	1	...
1950	6	2	...
1950	6	3	...
1950	6	4	...
1950	6	5	...
1950	6	6	...
1950	6	7	...
1950	6	8	...
1950	6	9	...
1950	6	10	...
1950	6	11	...
1950	6	12	...
1950	7	1	...
1950	7	2	...
1950	7	3	...
1950	7	4	...
1950	7	5	...
1950	7	6	...
1950	7	7	...
1950	7	8	...
1950	7	9	...
1950	7	10	...
1950	7	11	...
1950	7	12	...
1950	8	1	...
1950	8	2	...
1950	8	3	...
1950	8	4	...
1950	8	5	...
1950	8	6	...
1950	8	7	...
1950	8	8	...
1950	8	9	...
1950	8	10	...
1950	8	11	...
1950	8	12	...
1950	9	1	...
1950	9	2	...
1950	9	3	...
1950	9	4	...
1950	9	5	...
1950	9	6	...
1950	9	7	...
1950	9	8	...
1950	9	9	...
1950	9	10	...
1950	9	11	...
1950	9	12	...
1950	10	1	...
1950	10	2	...
1950	10	3	...
1950	10	4	...
1950	10	5	...
1950	10	6	...
1950	10	7	...
1950	10	8	...
1950	10	9	...
1950	10	10	...
1950	10	11	...
1950	10	12	...
1950	11	1	...
1950	11	2	...
1950	11	3	...
1950	11	4	...
1950	11	5	...
1950	11	6	...
1950	11	7	...
1950	11	8	...
1950	11	9	...
1950	11	10	...
1950	11	11	...
1950	11	12	...
1950	12	1	...
1950	12	2	...
1950	12	3	...
1950	12	4	...
1950	12	5	...
1950	12	6	...
1950	12	7	...
1950	12	8	...
1950	12	9	...
1950	12	10	...
1950	12	11	...
1950	12	12	...