

## CONTACT DETAILS (CONTINUED):

### North Lanarkshire Social Work Departments:

❖ Airdrie	01236 757000
❖ Bellshill	01698 346666
❖ Coatbridge	01236 622100
❖ Cumbernauld	01236 638700
❖ Motherwell	01698 332100
❖ Wishaw	01698 348200
❖ Out of Hours:	0800 121 4114

### South Lanarkshire Social Work Departments

❖ Rutherglen	0141 613 5000
❖ Blantyre	01698 527400
❖ Clydesdale	01555 673000
❖ East Kilbride	01355 807000
❖ Hamilton	01698 455400
❖ Larkhall	01698 884656
❖ Out of Hours:	0800 678 3282

### Family Protection Unit (F.P.U.) – Police:

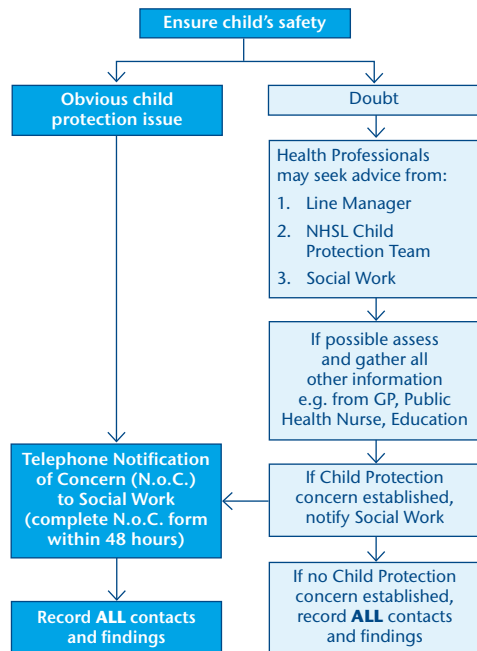
01698 202538

### Hospitals:

❖ Hairmyres:	01355 585000
❖ Monklands:	01236 748748
❖ Wishaw General:	01698 361100

## HEALTH PROFESSIONALS WORKING IN COMMUNITY

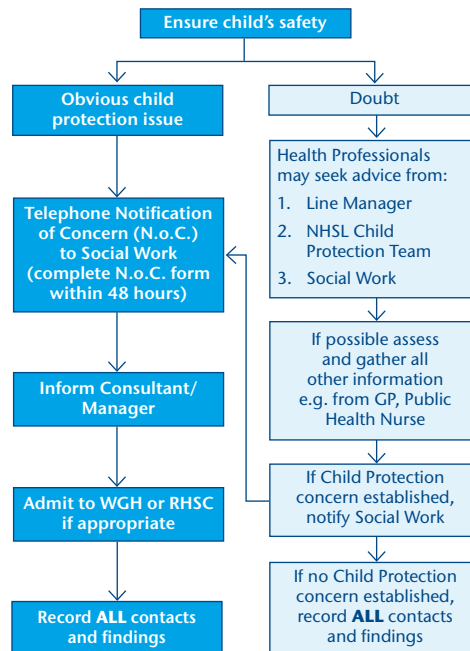
### WHERE THERE IS SUSPICION OF ABUSE



One should never hesitate to seek advice and share concerns with appropriate colleagues.

## HEALTH PROFESSIONALS WORKING IN HOSPITAL

### WHERE THERE IS SUSPICION OF ABUSE



Guidance note: Where there are obvious child protection concerns out of hours and:

- Social Work cannot be contacted, admit child to Ward 19 (WGH) who will contact Social Work in the morning.
- Social Work will be delayed for some time child can wait in Ward 19 (WGH) if accompanied by an appropriate adult.

# CHILD PROTECTION GUIDANCE FOR ALL NHS LANARKSHIRE (NHSL) EMPLOYEES

May 2013



**“Child protection”** means protecting a child from child abuse or neglect.

Abuse or neglect need not have taken place; it is sufficient for a risk assessment to have identified a likelihood of significant harm from abuse or neglect.

**“Harm”** means the ill treatment or the impairment of the health or development of the child, including, for example, impairment suffered as a result of seeing or hearing the ill treatment of another.

In this context, ‘development’ can mean physical, intellectual, emotional, social or behavioural development and “health” can mean physical or mental health.

*(National Guidance for Child Protection in Scotland 2010)*

- ❖ All allegations of child abuse or neglect including anonymous referrals, referred to any NHSL employee must be taken seriously and the information passed to social work and/or police as soon as possible.
  - ❖ Whilst social work and police are lead agencies in terms of any investigation around possible child protection concerns, health workers have a key role to play in assisting any enquiry. Relevant information must always be disclosed to social work and/or police where it is necessary to safeguard the child’s welfare.
  - ❖ If the health worker is unsure whether the child’s presentation is due to abuse or illness, they should discuss the concerns with their Line Manager, NHS Lanarkshire Child Protection Team or Child Protection Medical Helpline. If still in doubt, inform social work of the concern.
  - ❖ All NHSL employees MUST report concerns about any child/young person they suspect or believe to be at risk of abuse and neglect, to the local area social work department.
    - ◆ Contact appropriate area social work by phone to alert them of your concerns
    - ◆ Complete and submit a “Notification of Concern” form within 48 hours (as per NHSL Guidance)
    - ◆ Follow the relevant Child Protection flowchart (Acute & Primary Care)
- CONFIDENTIALITY:**

If a child is considered to be at risk of harm, relevant information must always be shared.

*National Guidance for Child Protection in Scotland 2010:28(93)*
- USEFUL WEB LINKS**
- ❖ **National Guidance for Child Protection in Scotland (2010)**  
<http://www.scotland.gov.uk/Resource/Doc/334290/0109279.pdf>
  - ❖ **National Guidance for Child Protection in Scotland: Guidance for Health Professionals in Scotland (2012)**  
<http://www.scotland.gov.uk/Publications/2012/12/9727/downloads>
  - ❖ **West of Scotland Child Protection Procedures Version 4.0 (2011)**  
<http://www.online-procedures.co.uk/westofscotland/>
  - ❖ **NHS Lanarkshire Additional Child Protection Policies and Guidance (FirstPort)**  
<http://firstport/sites/childprotection/default.aspx>

#### **CONTACT DETAILS:**

**NHS Lanarkshire  
Child Protection Team:** 01698 452861(62)

- ❖ Monday - Thursday: 8.45am - 5.00pm
- ❖ Friday: 8.45am - 4.30pm

**Child Protection  
Medical Helpline:** 01698 283159

- ❖ Monday - Friday: 9.00am - 7.00pm
- ❖ Saturday and Sunday: 9.00am -1.00pm
- ❖ Public Holidays: 9.00am -1.00pm