

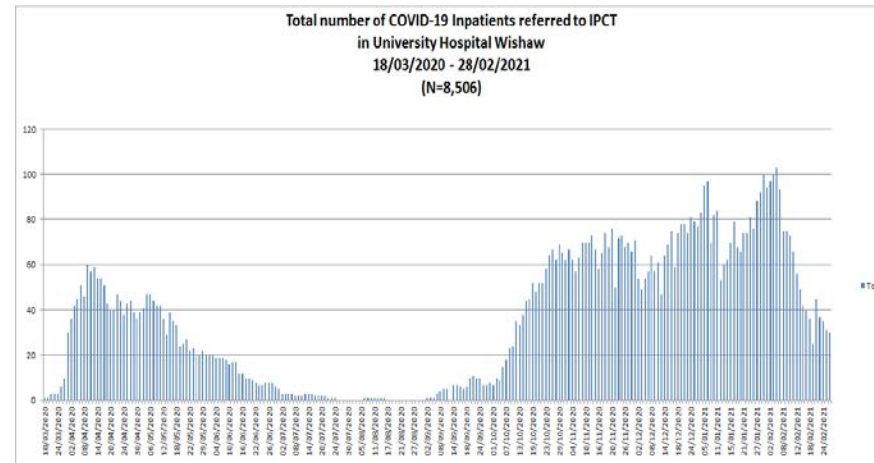
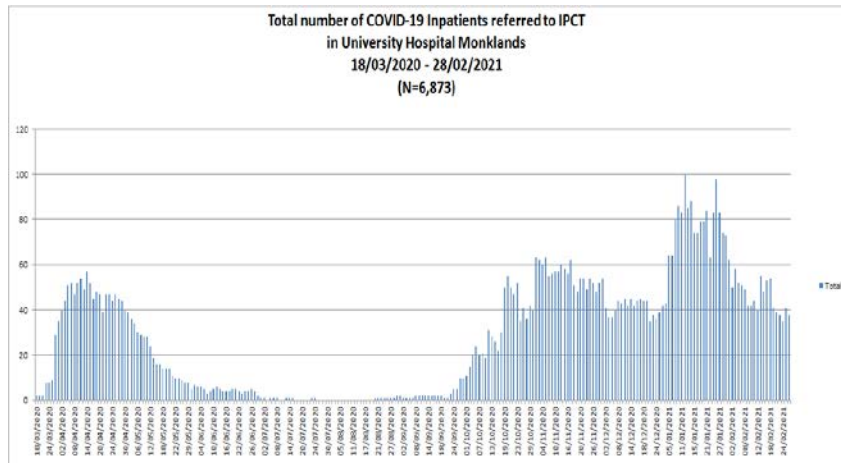
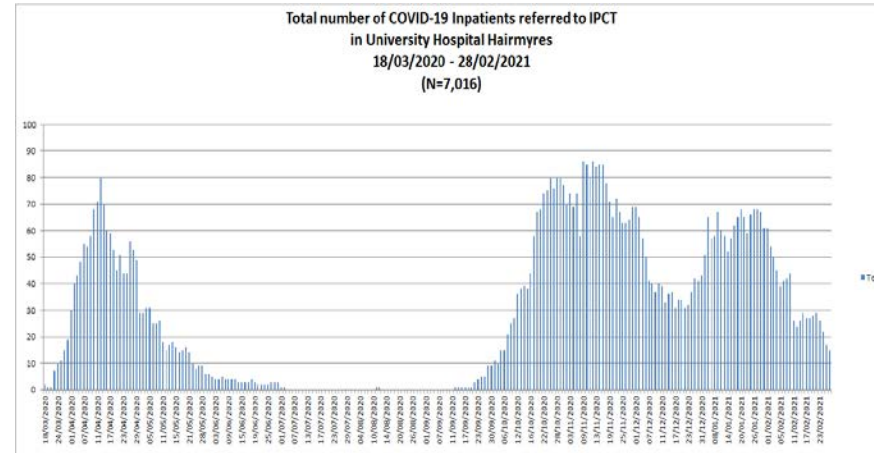
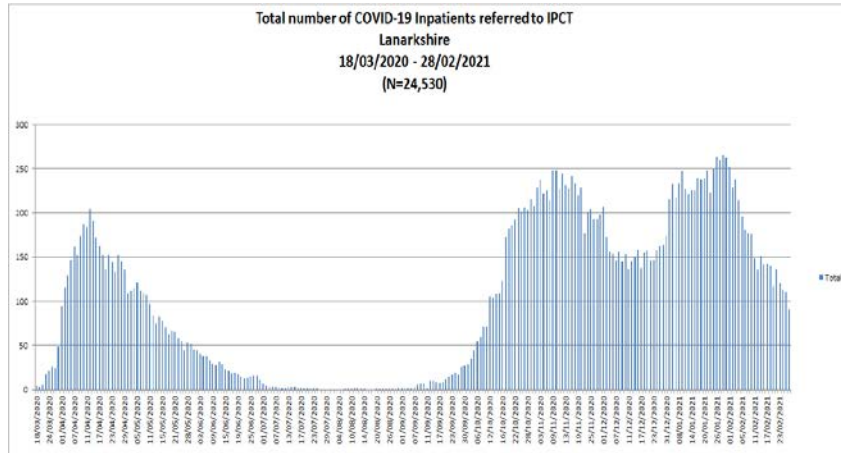
Infection Prevention & Control Covid -19 clusters and outbreaks dashboard

March 2020

| | MEASURE | Measure Code | Descriptor | Performance Indicator |
|---|-----------|--------------|---|-----------------------|
| 1 | Covid-19 | 1.1 | Covid -19 Inpatients referred to IP&C - Site | LOWER is Better |
| | | 1.1.1 | Covid -19 Inpatients referred to IP&C – H&SCPs | LOWER is better |
| | | 1.1.2 | Covid -19 Hospital onset cases - Site | LOWER is better |
| | | 1.2 | Covid -19 Number of closed wards – site | LOWER is Better |
| | | 1.2.1 | Covid-19 Number of closed wards – H&SCP | LOWER is Better |
| | | 1.3.1 | Covid -19 Total number of clusters (confirmed cases) - site | LOWER is Better |
| | | 1.3.2 | Covid -19 Total number of clusters (confirmed cases) - H&SCPs | LOWER is Better |
| 2 | Outbreaks | 2.1 | Covid -19 clusters | LOWER is Better |
| | | | | |
| | | | | |
| | | | | |
| | | | | |

 Higher is Better

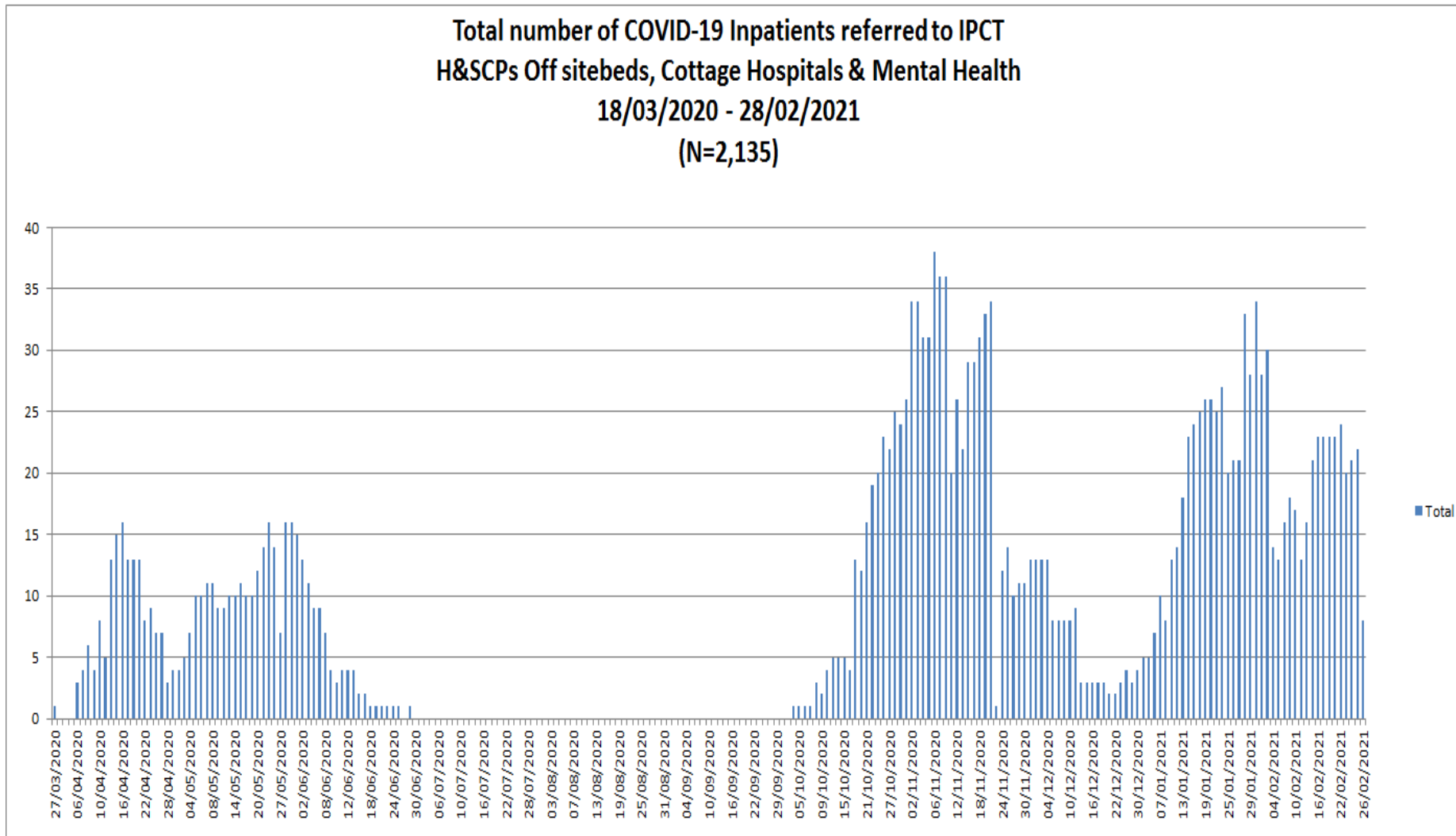
 Lower is Better



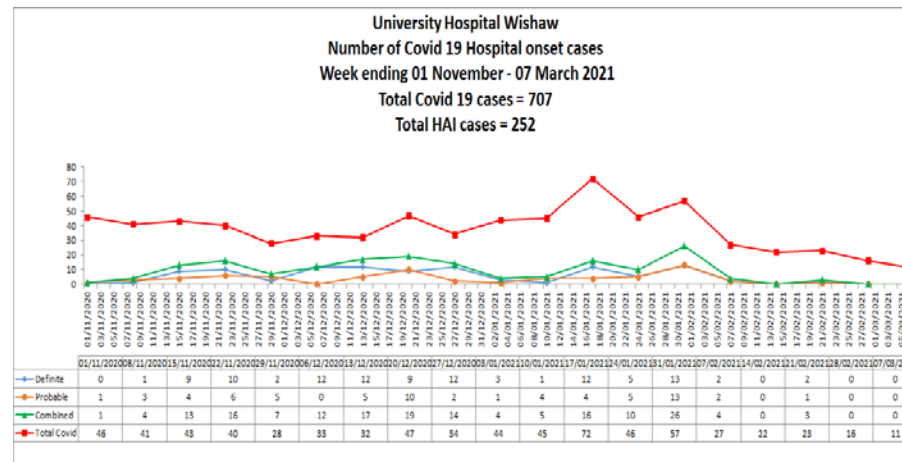
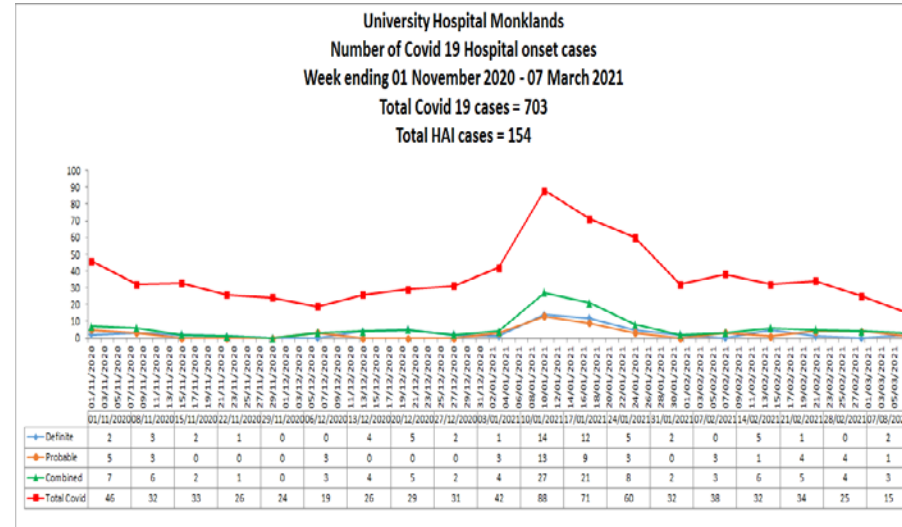
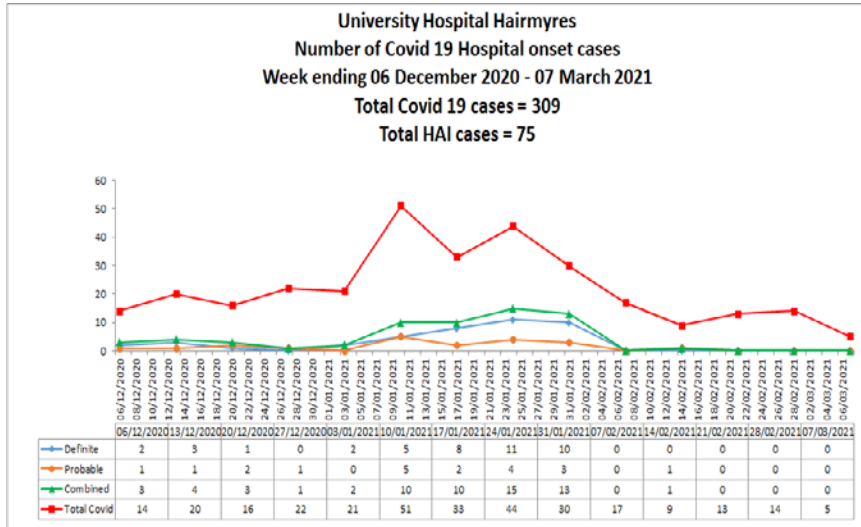
Comment: As displayed in the data there was a surge in referrals to IPC at the beginning of October 2020 which decreased slightly in December in both UHH and UHM and then rose again in January 2021. UHW continued to see a large number of referrals during December 2020. This is reflective of the ongoing site wide response to an increase in ward and bay closures on site.

1.1.1

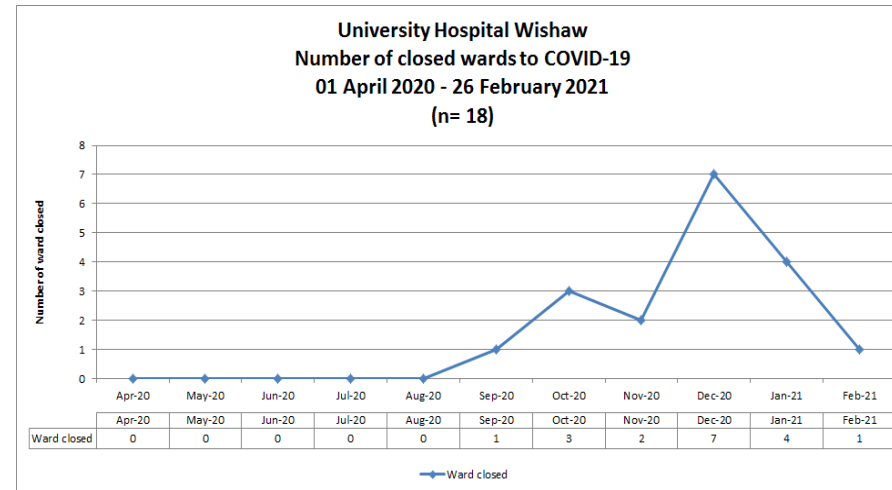
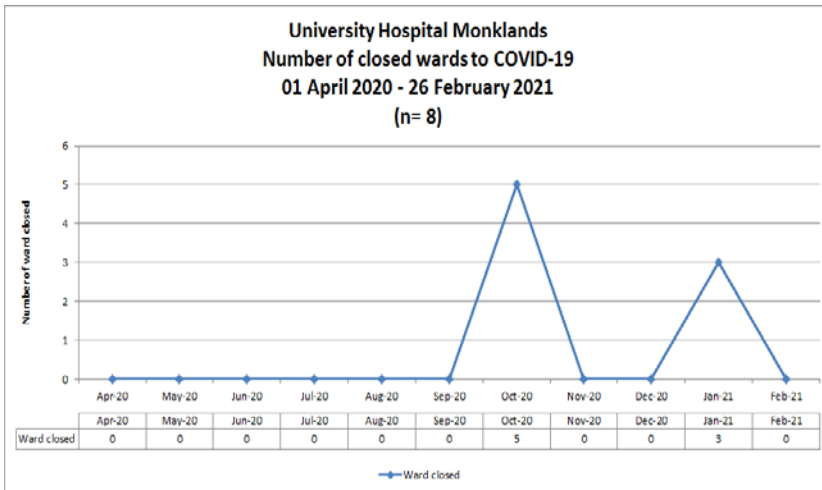
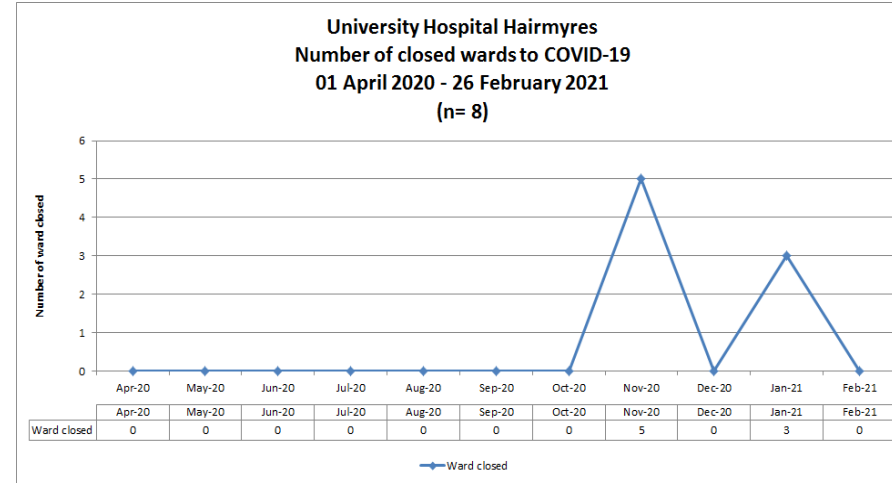
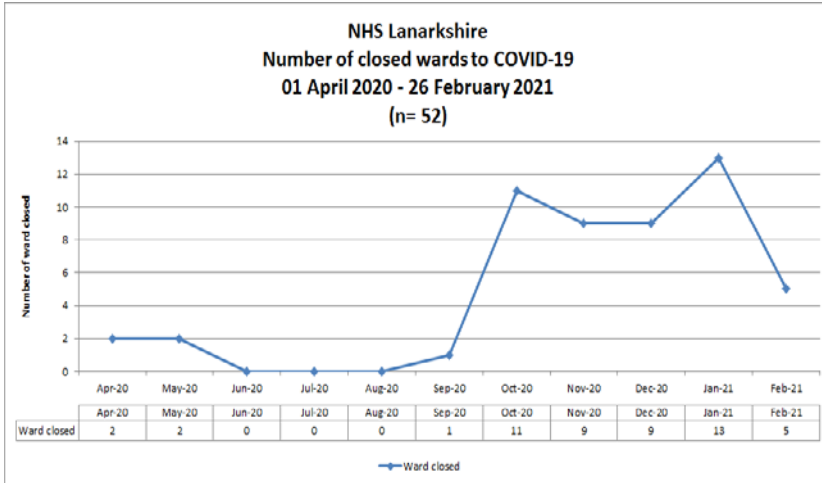
Covid -19 Inpatients referred to Infection Prevention & Control – H&SCP



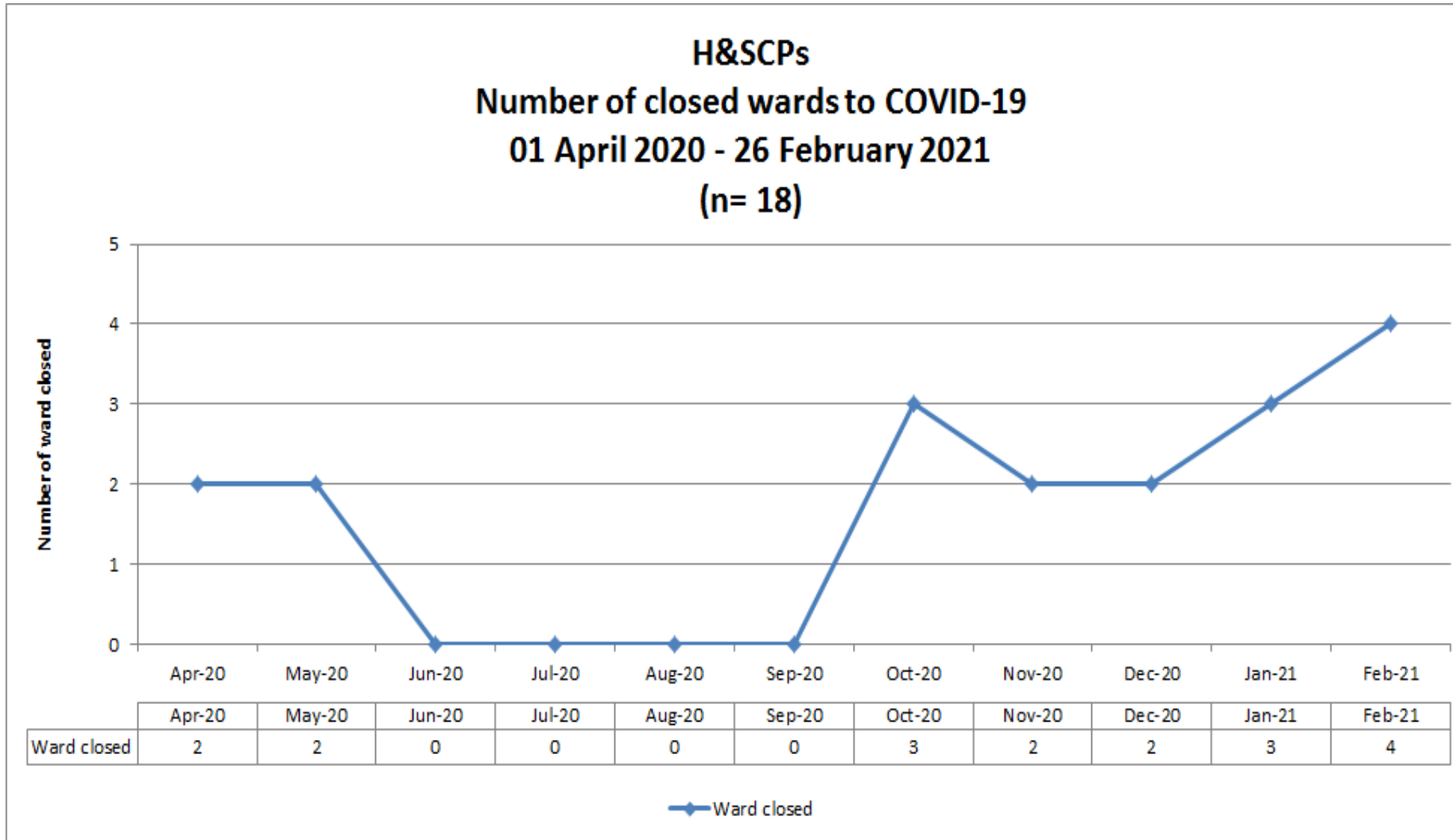
Comment: As highlighted above a similar picture was evident in the HSCP wards; increase in referrals in October 2020, reduction mid-December and a significant rise in cases in January through to February 2021.



Comment: The data above displays the number of probable and definite hospital onset cases of COVID-19 infection as defined using internationally agreed definitions. January 2021 was a pressure point in terms of surge in cases and associated nosocomial transmission. This hospital prevalence was similar to community prevalence at this time. High community prevalence resulted in higher hospital admissions and nosocomial spread.



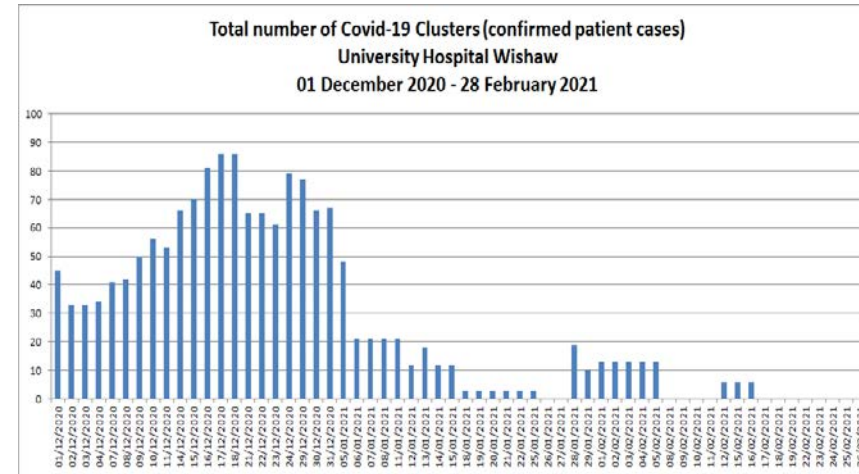
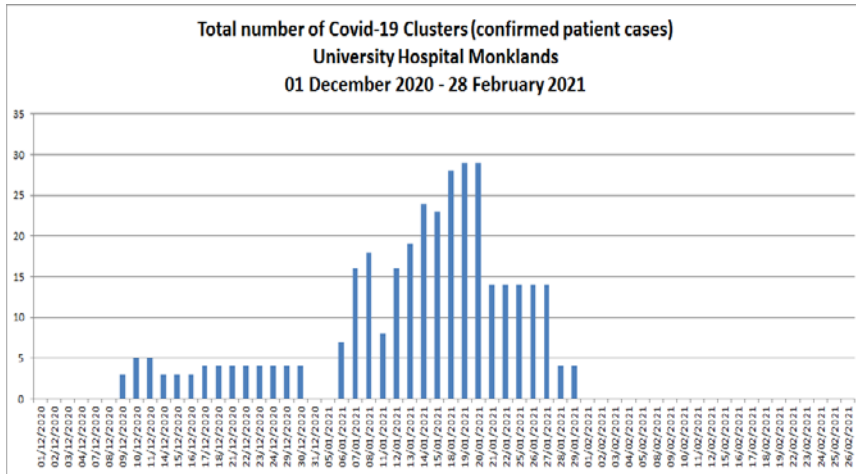
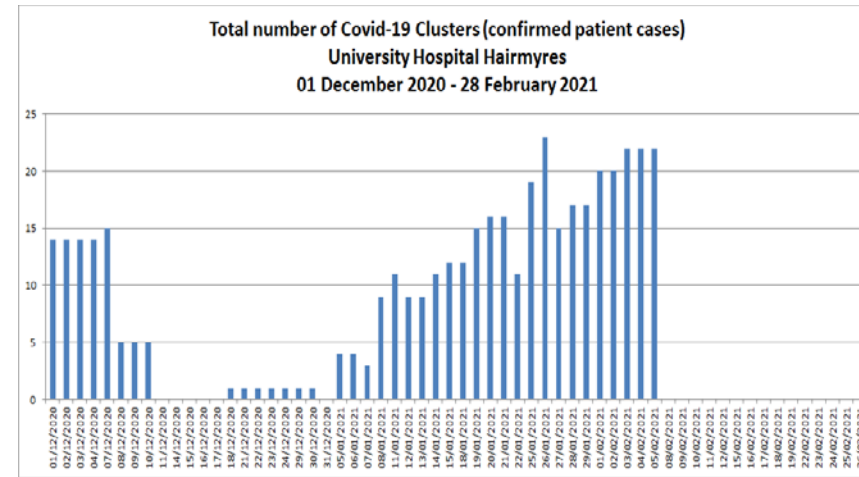
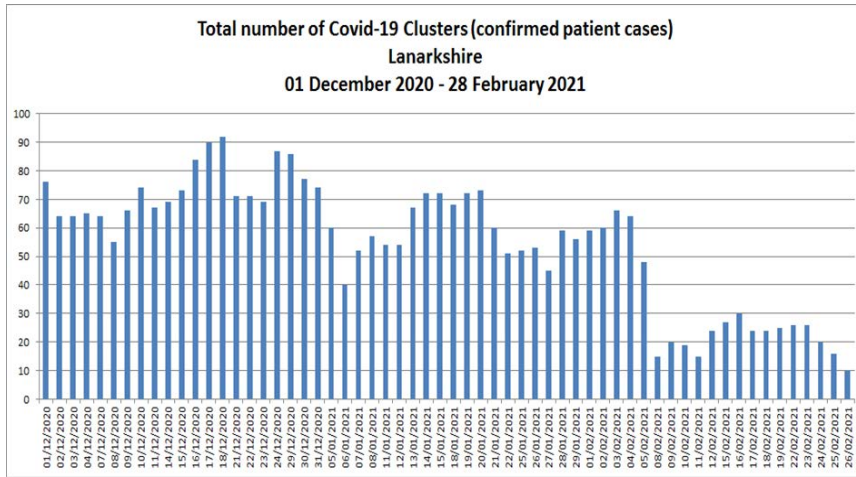
Comment: The data suggests that the number of closed wards in Lanarkshire rose in October 2020 and again in January 2021. All three acute sites were equally impacted by these closures with UHW disproportionately affected.



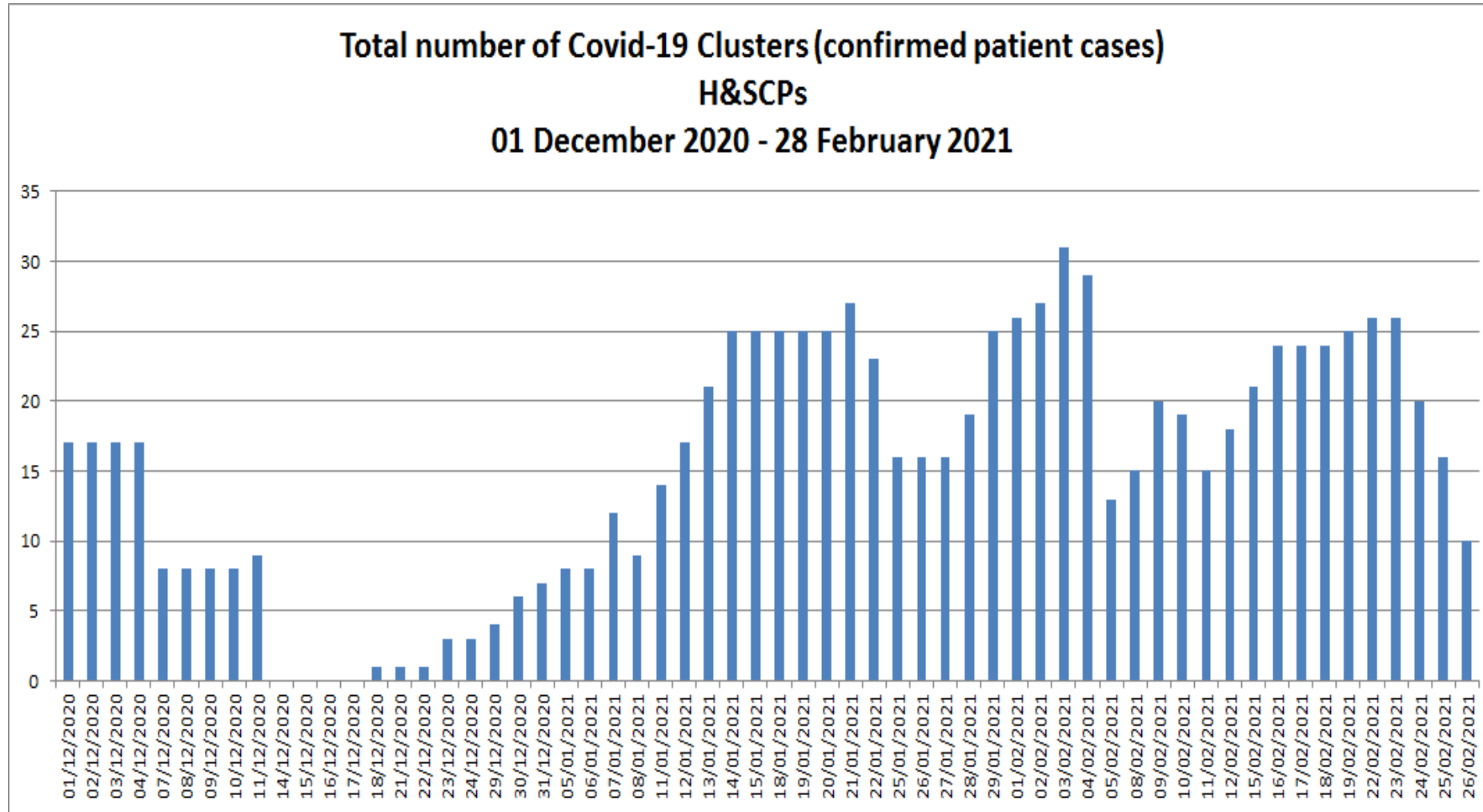
Comment: The HSCP were also affected by outbreaks and ward closures from October through to February 2021.

1.3.1

Covid-19 Total number of Clusters (confirmed patient cases) - site



Comment: There is identifiable variance over time in terms of the number of confirmed patient cases and respective site. UHW was affected worst during December and this continued through January 2021. UHH and UHM were more affected throughout January 2021.

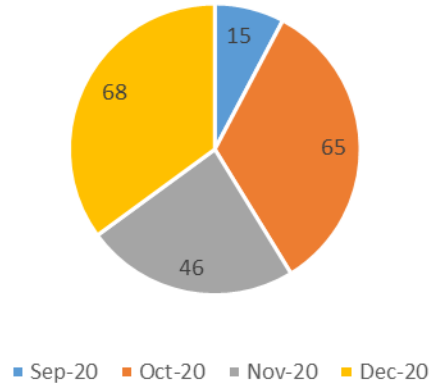


Comment: The pressures in the HSCP remained fairly constant throughout late December 2020 through to February 2021. This included outbreaks in our Mental Health and Learning Disability units.

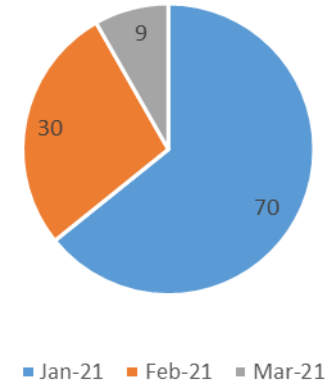
2.1

Covid -19 Total number of Clusters

Restrictions - COVID Contacts
(n=194 episodes)



Restrictions - COVID Contacts
(n= 109 episodes)



Comment: From September 2020 until March 2021 there have been 303 instances throughout NHSL where IPC restrictions have been instituted as a result of identification of COVID-19 contacts within wards. Contacts were monitored until the patients were either isolated, discharged or until 14 day incubation period lapsed.