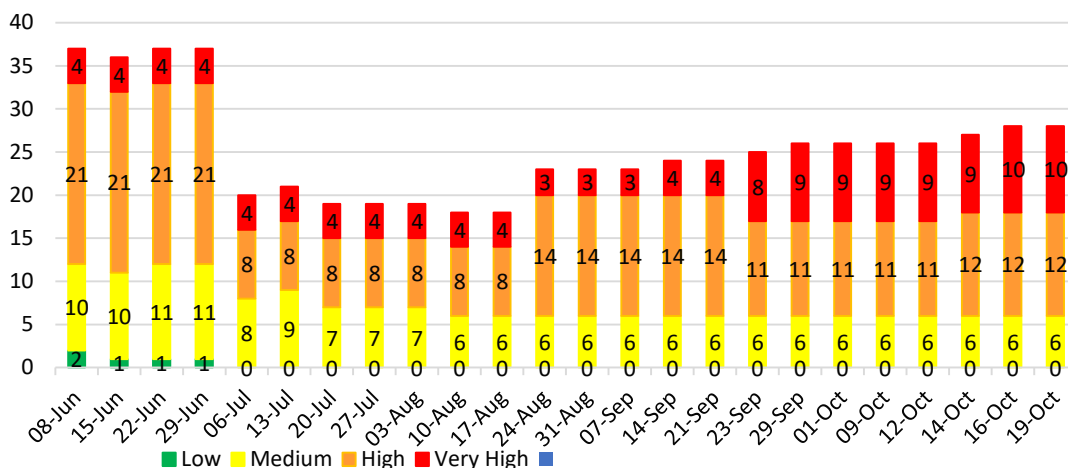


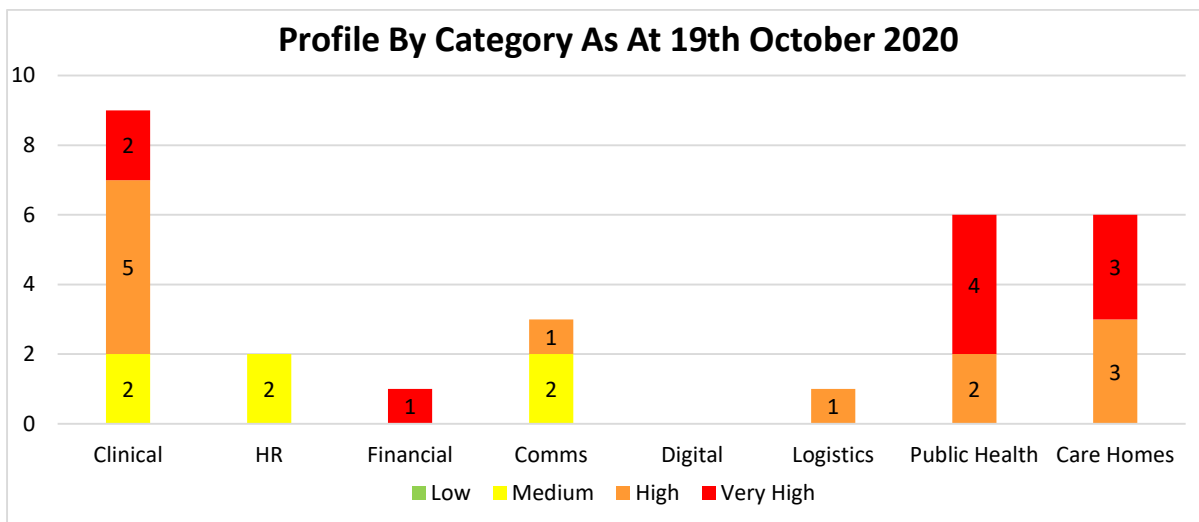
**STRATEGIC COMMAND REPORT FOR CMT
MAJOR INCIDENT COVID-19 RISK REGISTER
19th OCTOBER 2020**

There are 28 risks on the major incident Covid-19 risk register and some new risks around SIRS and CAC pathway being quantified.

Covid Risk Profile By Severity & Number As At 19th October 2020



Profile By Category As At 19th October 2020



Since the last reporting period there are no new or closed risks, risks with a change in status or risks transferred / integrated with any other risk register.

Very High Graded Risks – Strategic

Category	Reference	Risk
Care Home	CH/06	Asymptomatic weekly screening of care home staff may lead to false/ weak positive results which can result in unnecessary restrictions placed on care homes.
Care Home	CH/07	Potential for new outbreaks in care homes as community prevalence and associated clusters increase
Care Home	CH/01	Local care homes may have such significant problems with staffing levels that they are unable to staff the homes
Clinical	CL/PHSC/18	Impact of overwhelming high volume services as they stand up again, regarding physical distancing and footfall eg immunisation and cervical smears
Clinical	CL/22	There is a risk that there will be insufficient staff to provide the required cover priority areas over winter
Finance	FC/01	Significant financial expenditure & NHSL's ability to sustain recurring financial balance for 2020/21
Public Health	PBH/06	Critical need for 4.0 wte Band 4 staff on a seven day working pattern required immediately to sustain the full public health department functioning.
Public Health	PBH/02	Current & surge capacity.
Public Health	PBH/04	Lack of staffing resource to maintain the Test & Protect Service.
Public Health	To be allocated	Significant impact on mental health and wellbeing of public health team as workload and pace continues to intensify

High Graded Risks - Tactical

Category Of Risk	Ref in Covid Risk Register	Risk
Clinical	CL/PH/01	Cessation of opioid substitution therapy
Clinical	CL/CRG/09	Requirement of FFP3 for CPR & potential delays in undertaking CPR
Clinical	CL/PHSC/17	Progression of dental disease in a cohort of young people that can no longer be managed conservatively, and requires urgent surgery with general anaesthesia
Clinical	CL/AC/19	Laboratories potentially will be become overwhelmed as normal NHSL activity starts to resume. This could result in delays to turnaround times which could impact on patient care.
Clinical	CL/AC/20	Supply of Reagents to sustain Covid-19 testing, managing on a week to week basis only
Care Home	CH/03	Testing asymptomatic care home residents as announced today (01/05/2020) by the First Minister may result in more care homes declaring a Covid outbreak and being closed.
Care Home	CH/04	Care Inspectorate has commenced its unannounced inspection of care homes which may result in requests for additional professional and clinical support to meet requirements of inspections.
Care Home	CH/05	SG guidance on visiting in care homes has been issued but with the caveat that the HPT have to review all 94 care homes risk assessments and plans prior to them proceeding via each stage of the visiting plan.
Public Health	PbH/03	The lack of overall strategy around the range of elements for COVID-19 Testing, including the variance of symptomatic and asymptomatic cases eg accuracy of current test; lack of definition; specificity and sensitivity, can contribute to false positives and low level positive outcomes increasing the number of cases to be repeated and/or followed up with contact tracing within a finite resource.
Public Health	PbH/05	There is a risk that there is lack of co-ordination and integration of both the NHSL and the Scottish data on the local epidemiology, response and impact of COVID-19

Comms	COM/05	Sustainability of care homes due to Covid-19, impacting across H&SCP's with potential to lead to reputational damage in the eyes of the media, public and service users.
Logistics	LOG/EXPT/06	There is a risk that Roche, who are the main supplier of the labs managed service contract, will not be able to fulfil all contractual supplies due to logistics and IT issues associated with their new distribution plant.