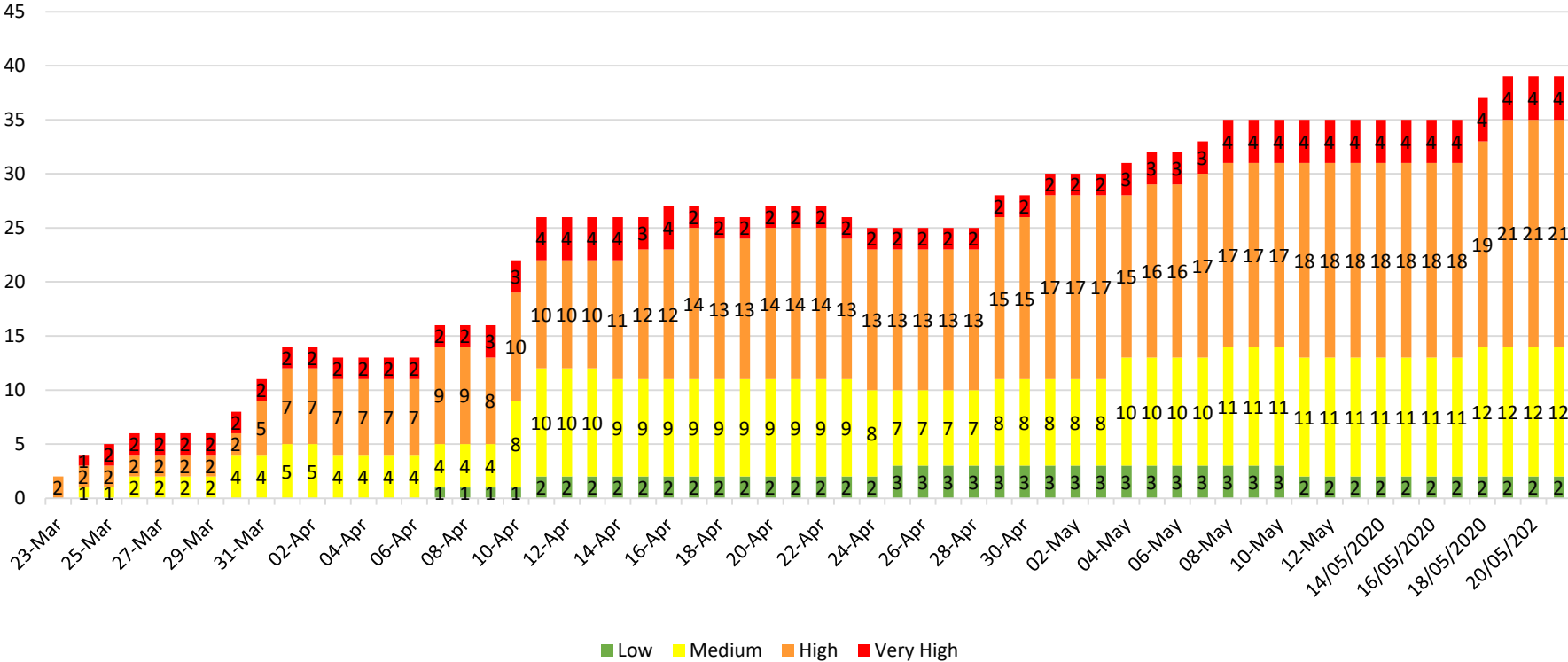


STRATEGIC (GOLD) COMMAND
COVID-19
21th MAY 2020

Daily Covid Risk Profile As At 9.30am



NEW RISKS

Opened	Risk	Category	Risk Level
No new risks			

CHANGE IN STATUS

Risk	Category	Risk Level Last Review	Risk Level Current
No material change			

CLOSED RISKS

Closed	Risk	Category	Risk Level
No closed risks			

VERY HIGH GRADED RISKS (STRATEGIC)

Category	Reference	Risk
Clinical	CL/PHSC/06	Care home support for patient care and outbreak management
Clinical	CL/PHSC/15	Testing of asymptomatic care home residents & staff creates the potential for a number of homes to declare an outbreak with impact on patient flow from hospital and recovery plans
Clinical	CL/PHSC/18	Impact of overwhelming high volume services as they stand up again, regarding physical distancing and footfall eg immunisation and cervical smears
Finance	FC/01	Significant financial expenditure & NHSL's ability to sustain recurring financial balance for 2020/21

HIGH GRADED RISKS (TACTICAL)

Category Of Risk	Reference in Covid Risk Register	Risk Summary
Clinical	CL/PH/04	Specialised medicine supply for ITU
Clinical	CL/CRG/09	Requirement of FFP3 for CPR & potential delays in undertaking CPR
Clinical	CL/AC/08	ITU capacity
Clinical	CL/PH/01	Cessation of opioid substitution therapy
Clinical	CL/HSCP/14	Move to enhanced PPE across community services in sustained transmission period, impacting on supply of PPE and safety for staff and patients
Clinical	CL/AC/12	Loss of available acute beds as HPS guidance requires 14 days isolation and 2 negative tests pre transfer to care homes
Clinical	CL/AC/13	Reduced bed availability across sites as they strive to protect shielded persons when they are inpatients

ITEM 21D

Clinical	CL/AC/16	Capacity to immediately comply with the national testing programme at both local and regional laboratory level, with the potential for non-compliance with the imminent Test, Trace & Isolate (TTI) programme as this is workforce intensive.
Clinical	CL/PHSC/17	Progression of dental disease in a cohort of young people that can no longer be managed conservatively, and requires urgent surgery with general anaesthesia
Clinical	CL/AC/19	Laboratories potentially will be become overwhelmed as normal NHSL activity starts to resume. This could result in delays to turnaround times which could impact on patient care.
HR	HR/01	Workforce Capacity
HR	HR/06	Lack of national testing strategy for effective staff management
Info/Digital	IDT/07	Instability and variable performance of Microsoft Teams as a business critical tool, with potential for missed information or incorrect interpretation of decisions, compromising decisions for business or patient care
Info / Digital	IDT/03	PPE for ehealth staff
Info / Digital	IDT/04	Increased risk of cyberattack
Info / Digital	IDT/06	Information Governance issues around Key Information Summaries (KIS)
Info / Digital	IDT/08	Use of unauthorised software, could access the Health Board network. This has been highlighted by the use of remote access software "Splashtop" by a single GP Practice in NHSL.
Info / Digital	IDT/09	Increased usage of SMS during Covid has led to 900% increase in cost with concern about volume use and purpose
Logistics	LOG/PSSD/04	Change in the SFRS response to automatic fire alarm activations at non-sleeping premises will be a single fire engine unless activation is accompanied by a 999 call confirming there is a fire.
Logistics	LOG/PSSD/03	Change to the waste disposal contract creating disruption
Communications	COM/05	Sustainability of care homes due to Covid-19, impacting across H&SCPs' with potential to lead to reputational damage in the eyes of the media, public and service users.