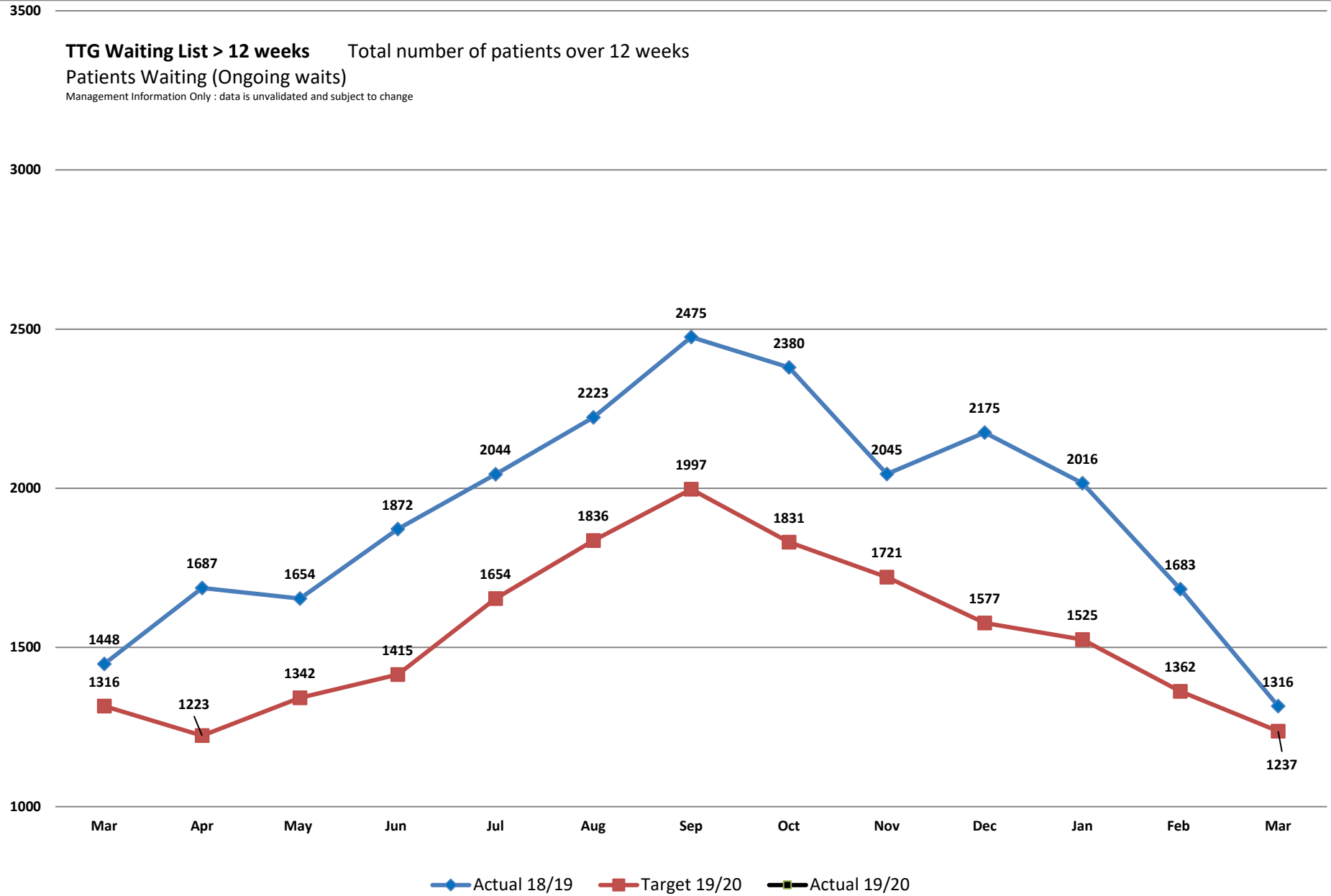


TTG Waiting List > 12 weeks Total number of patients over 12 weeks
 Patients Waiting (Ongoing waits)

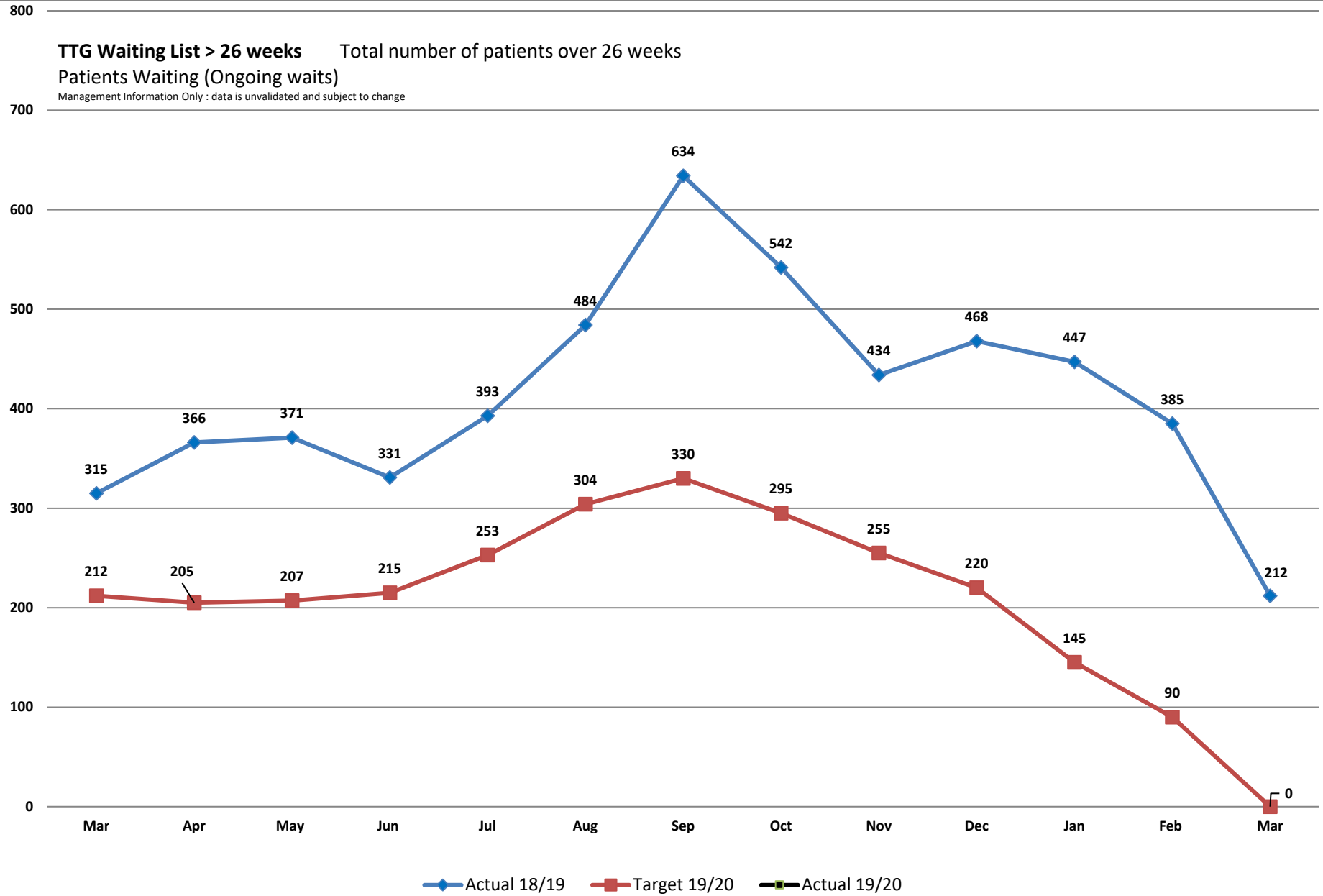
Management Information Only : data is unvalidated and subject to change



TTG Waiting List > 26 weeks

Total number of patients over 26 weeks
Patients Waiting (Ongoing waits)

Management Information Only : data is unvalidated and subject to change



TTG Waiting List % of patients within 12 weeks
Patients Waiting (Ongoing waits)
Management Information Only : data is unvalidated and subject to change

