

Outpatient Waiting List > 12 weeks

Total number of patients over 12 weeks

8500

Patients Waiting (Ongoing waits)

Management Information Only : data is unvalidated and subject to change

7500

6500

5500

4500

3500

2500

1500

Mar

Apr

May

Jun

Jul

Aug

Sep

Oct

Noc

Dec

Jan

Feb

Mar

3978

4588

5089

5611

6103

6418

6156

5544

5108

5351

4944

4141

2302

2709

3084

3316

3423

3535

3583

3191

2756

2410

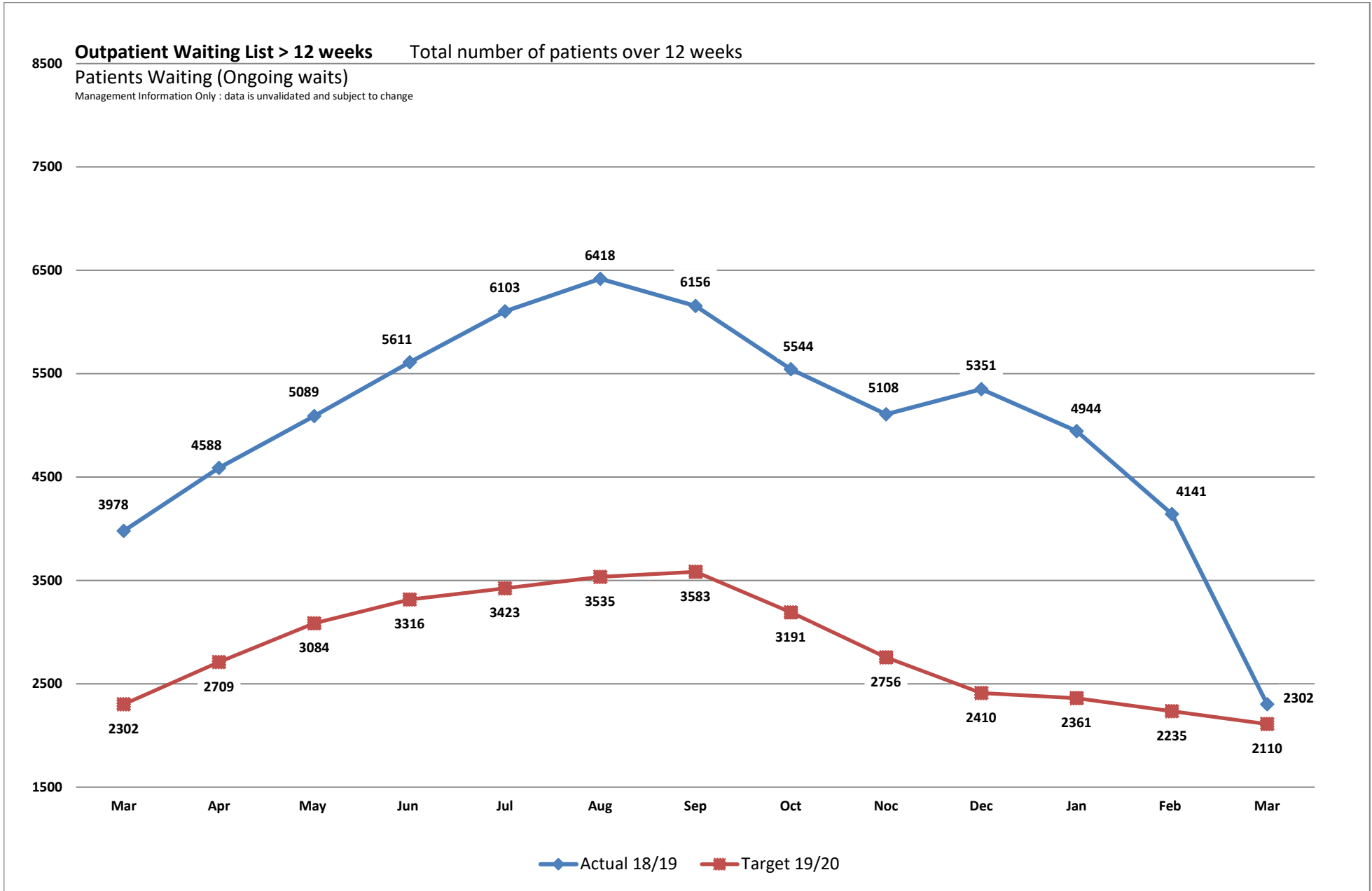
2361

2235

2110

2302

Actual 18/19 Target 19/20



Outpatient Waiting List

% of patients within 12 weeks

Patients Waiting (Ongoing waits)

Management Information Only : data is unvalidated and subject to change

